

8 7 6 5 4 3 2 1

REVISIONS			
ZONE	REV	DESCRIPTION	DATE
			APPD

PRINCIPAL PARTICULARS

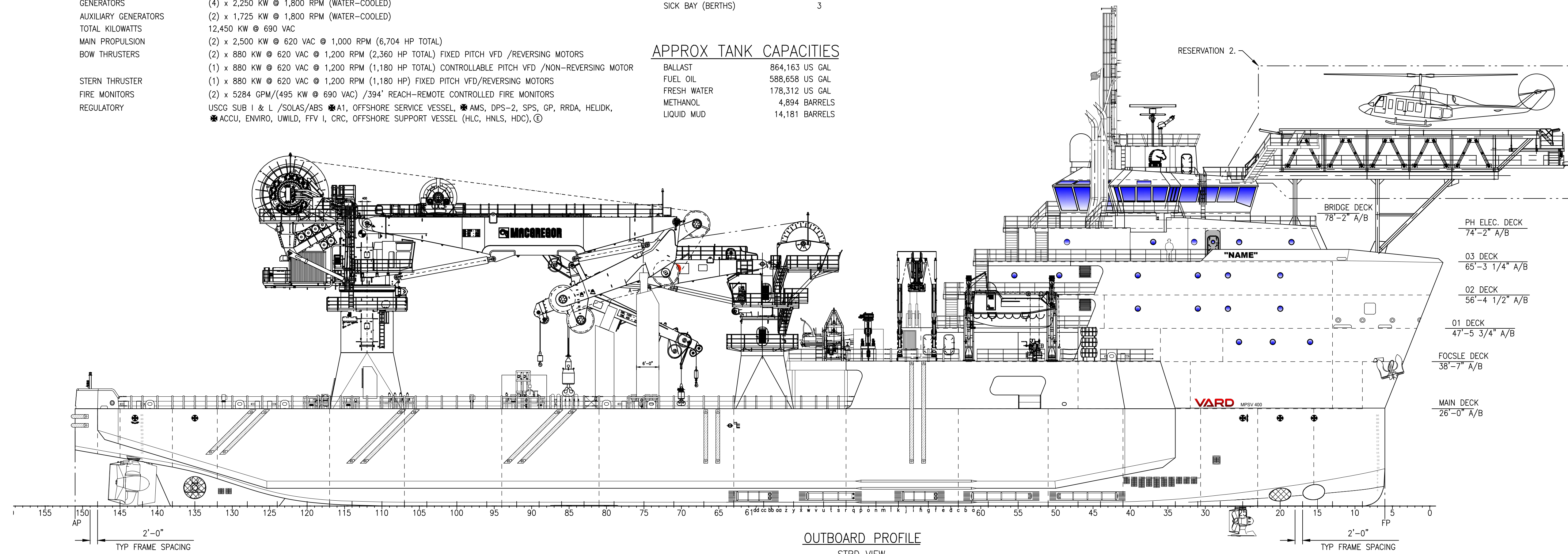
LOA	365'-6"
LBP - LWL	350'-0"
BEAM	64'-0" (76'-0" W/SPONSONS)
DEPTH	26'-0"
LOADLINE DRAFT	TBD
DESIGN DECK LOAD	10 MT/SQ. M (2048 LBS/SQ. FT) FR. r TO STERN
GENERATORS	(4) x 2,250 KW @ 1,800 RPM (WATER-COOLED)
AUXILIARY GENERATORS	(2) x 1,725 KW @ 1,800 RPM (WATER-COOLED)
TOTAL KILOWATTS	12,450 KW @ 690 VAC
MAIN PROPULSION	(2) x 2,500 KW @ 620 VAC @ 1,000 RPM (6,704 HP TOTAL)
BOW THRUSTERS	(2) x 880 KW @ 620 VAC @ 1,200 RPM (2,360 HP TOTAL) FIXED PITCH VFD /REVERSING MOTORS
	(1) x 880 KW @ 620 VAC @ 1,200 RPM (1,180 HP TOTAL) CONTROLLABLE PITCH VFD /NON-REVERSING MOTOR
STERN THRUSTER	(1) x 880 KW @ 620 VAC @ 1,200 RPM (1,180 HP) FIXED PITCH VFD/REVERSING MOTORS
FIRE MONITORS	(2) x 5284 GPM/(495 KW @ 690 VAC) /394' REACH-REMOTE CONTROLLED FIRE MONITORS
REGULATORY	USCG SUB I & L /SOLAS/ABS *A1, OFFSHORE SERVICE VESSEL, *AMS, DPS-2, SPS, GP, RRDA, HELIDK, *ACCU, ENVIRO, UWILD, FFV I, CRC, OFFSHORE SUPPORT VESSEL (HLC, HNLS, HDC), Ⓢ

SUMMARY TABLE

ACCOMMODATIONS	102 (7x4 MAN, 2x3 MAN, 31x2 MAN, 6x1 MAN)
STATEROOMS	46
HEADS	41
LOUNGE	1
LAUNDRY AREA	1
GALLEY	1
MESS AREA	1
SICK BAY (BERTHS)	3

APPROX TANK CAPACITIES

BALLAST	864,163 US GAL
FUEL OIL	588,658 US GAL
FRESH WATER	178,312 US GAL
METHANOL	4,894 BARRELS
LIQUID MUD	14,181 BARRELS



OUTBOARD PROFILE
STBD VIEW
SCALE: 1/16"=1'-0"

PH ELEC. DECK	74'-2" A/B
03 DECK	65'-3 1/4" A/B
02 DECK	56'-4 1/2" A/B
01 DECK	47'-5 3/4" A/B
FOCSLE DECK	38'-7" A/B
MAIN DECK	26'-0" A/B

RESERVATIONS

- ARRANGEMENT IN WAY OF LIFEBOATS
- HELIDECK PENDING FINAL EQUIPMENT SELECTION
- LOCATION OF STBD FRG/WORKBOAT

GULF ISLAND SHIPYARDS, LLC
P.O. BOX 1190 JENNINGS, LA 70546 • PH. 337-824-2210 FAX 337-824-2970

OWNER
365'-0" X 64'-0" X 26'-0" MPSV
For
HORNBECK OFFSHORE

Drawing Confidentiality Statement:
The use of this plan and/or disclosure of its contents, in any fashion, in whole or in part and/or its reproduction without the previous written permission of GULF ISLAND SHIPYARDS, LLC is strictly prohibited.

DRAWN BY: BSO
CHECKED BY: MC
APPROVED FOR CONSTRUCTION: # BY: #

TITLE
GENERAL ARRANGEMENT

SIZE: D	DRAWING NO. 369-601-01	REV. 7
SCALE: AS NOTED	DATE: 26-OCT-15	SHEET: 1 OF 5

VARD
a Fincantieri company
Vancouver, BC Canada Ottawa, ON Canada Houston, TX U.S.A.

8 7 6 5 4 3 2 1

16

15

14

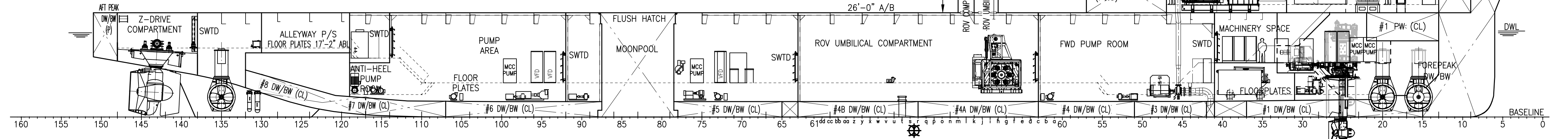
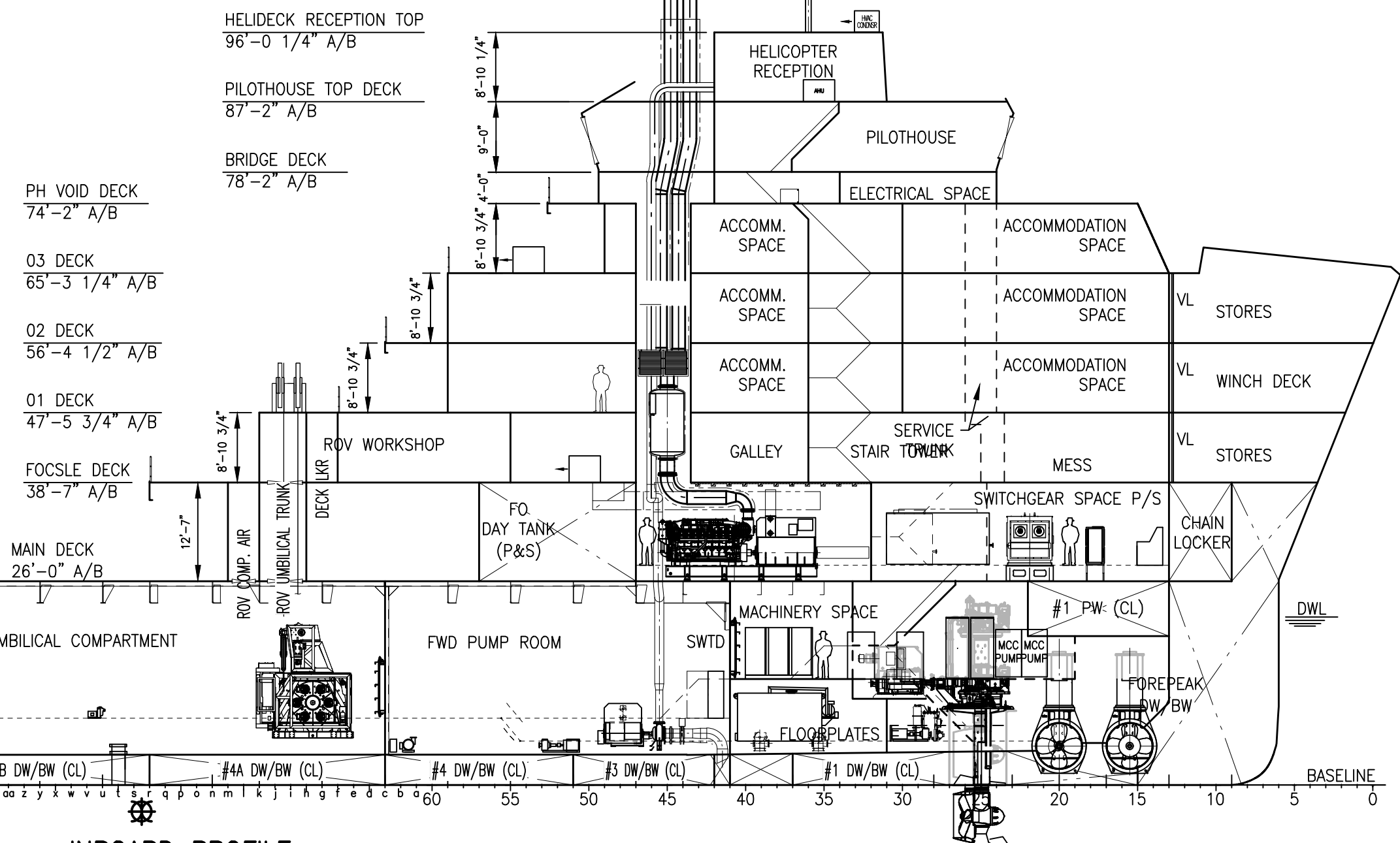
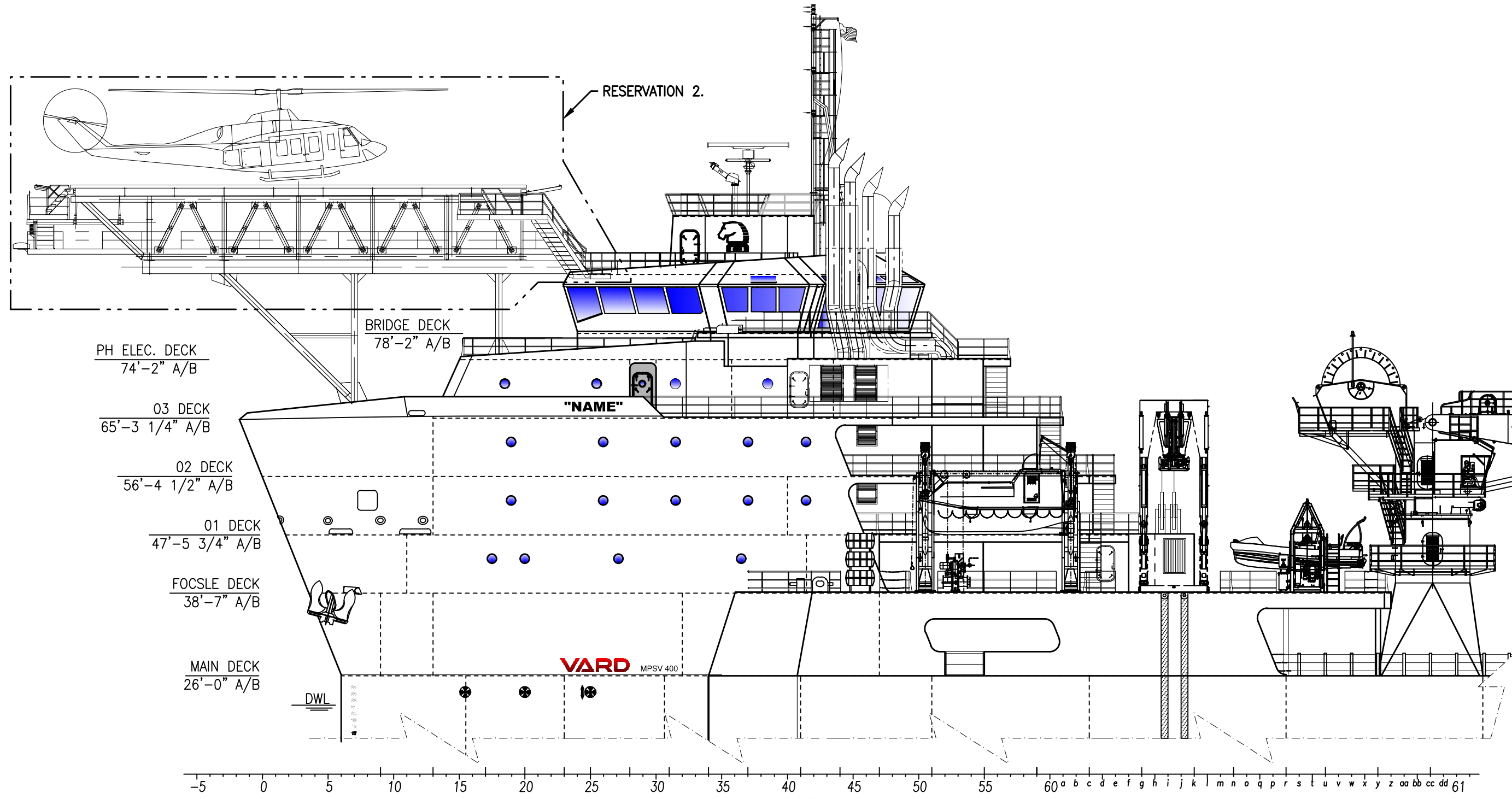
13

12

11

10

9



GULF ISLAND SHIPYARDS, LLC

DRAWN BY: BSO

CHECKED BY: MC

APPROVED FOR CONSTRUCTION: # BY: #

VARD
a Fincantieri company

Vancouver, BC Canada Ottawa, ON Canada Houston, TX U.S.A.

TITLE: GENERAL ARRANGEMENT			
SIZE: D	DRAWING NO. 369-601-01	REV. 7	
SCALE: AS NOTED	DATE: 26-OCT-15	SHEET 2 OF 5	

16

15

14

13

12

11

10

9

24

23

22

21

20

19

18

17

D

D

C

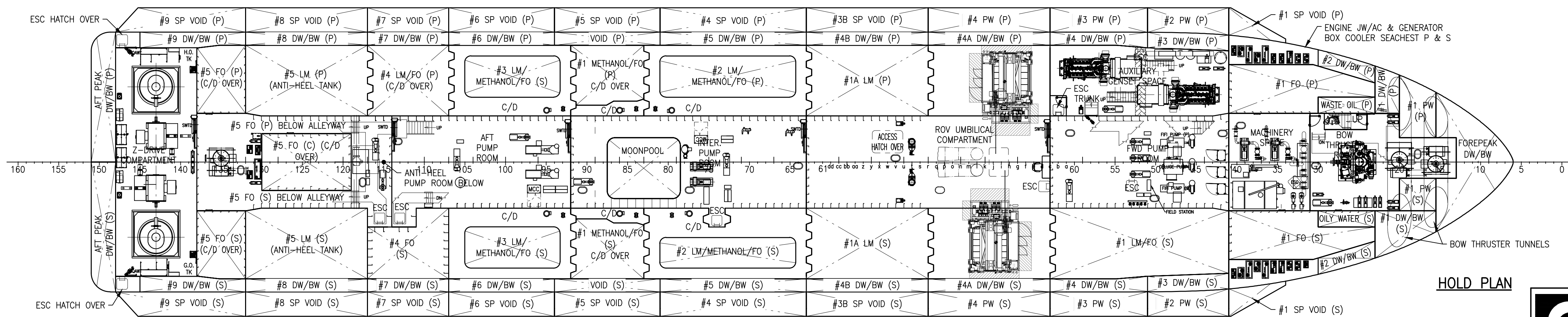
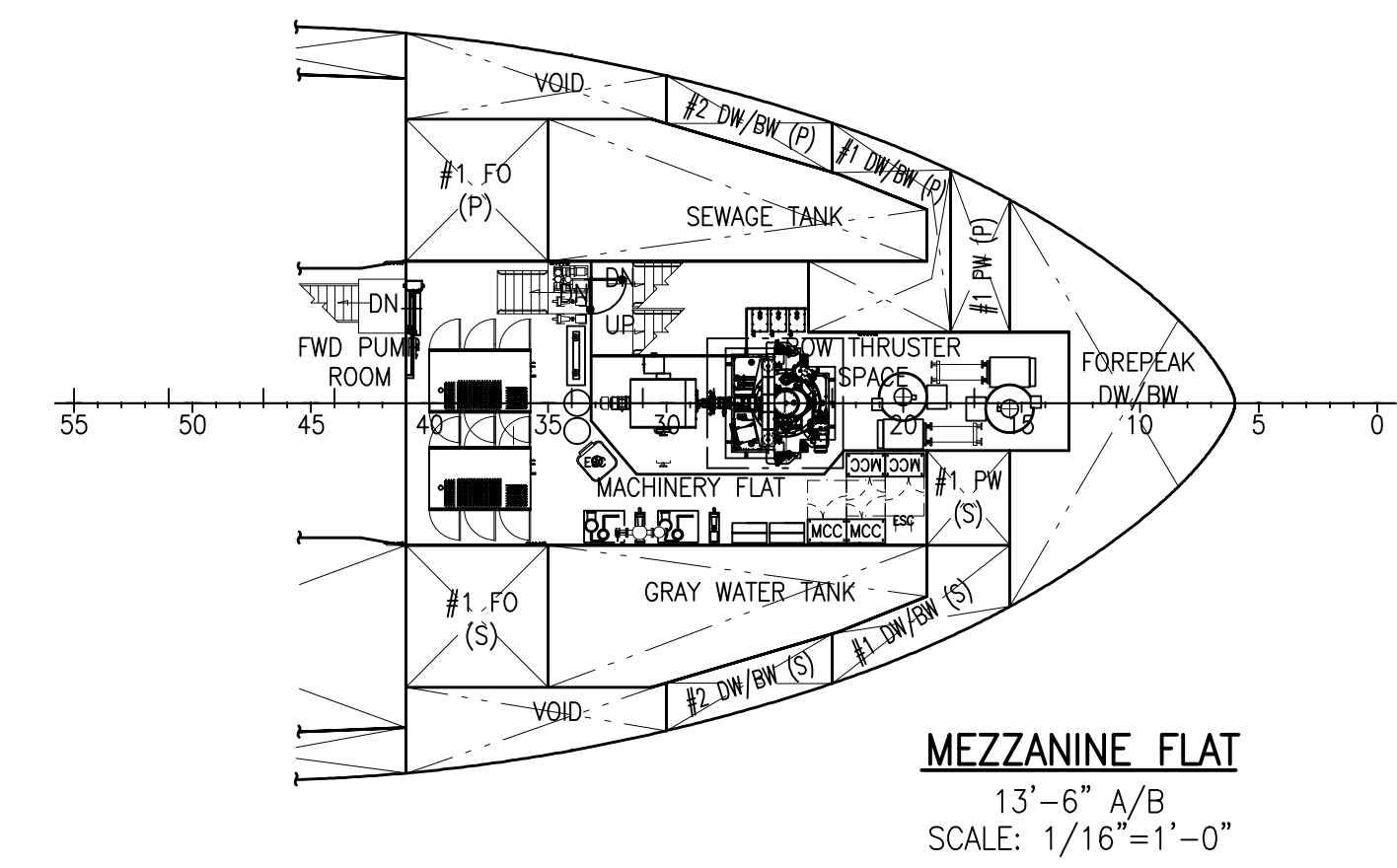
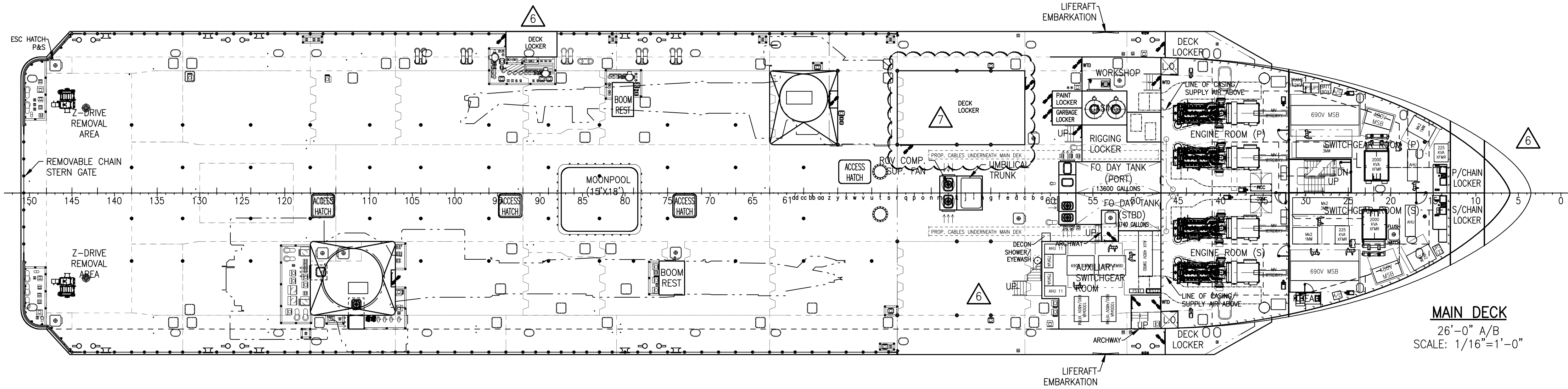
C

B

B

A

A



24

23

22

21

20

19

18

17



DRAWN BY:	BSO
CHECKED BY:	MC
APPROVED FOR CONSTRUCTION:	# BY: #

TITLE: GENERAL ARRANGEMENT			
SIZE:	D	DRAWING NO.	369-601-01
SCALE:	AS NOTED	DATE:	26-OCT-15
REV.	7	SHEET	3 OF 5

32

31

30

29

28

27

26

25

D

C

B

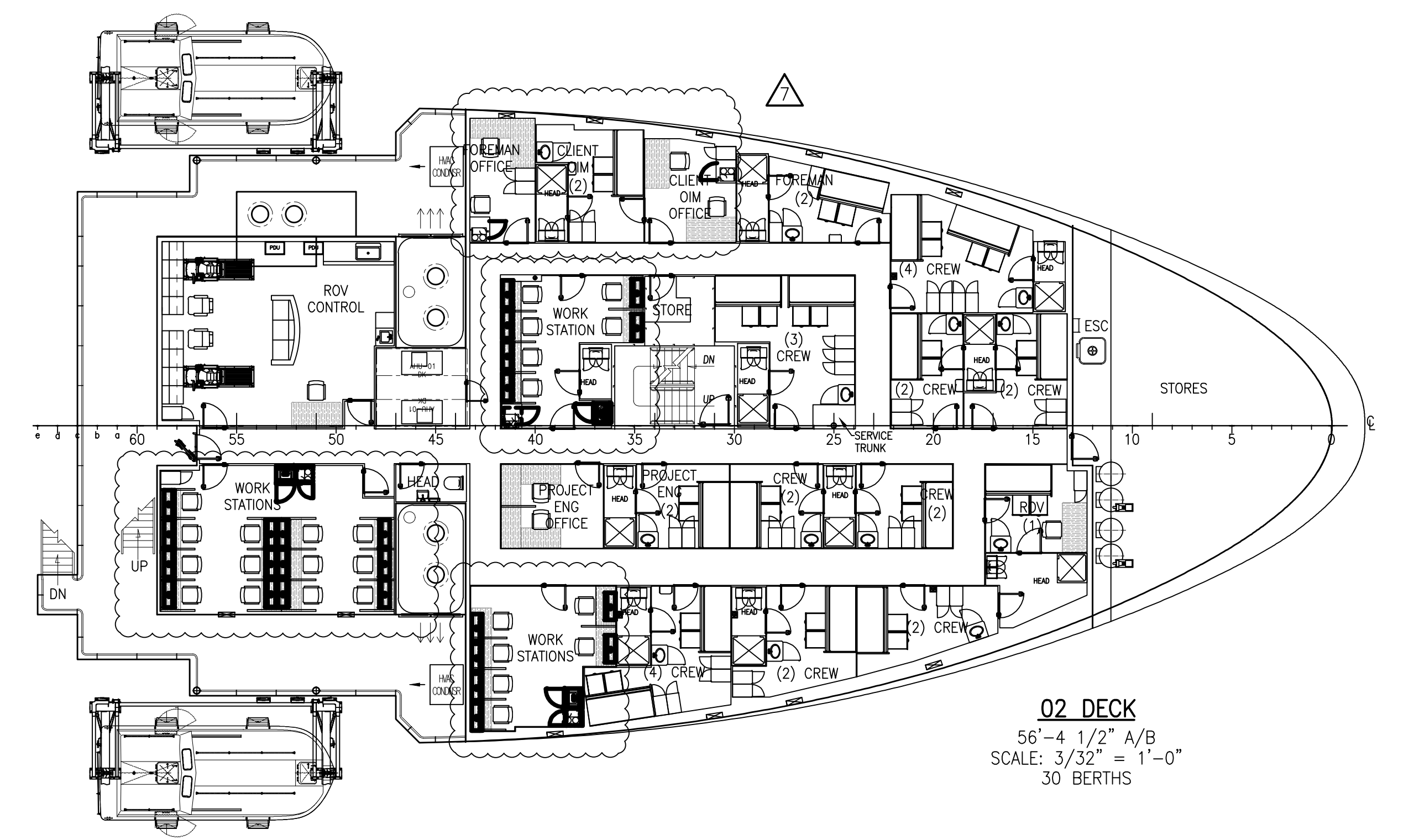
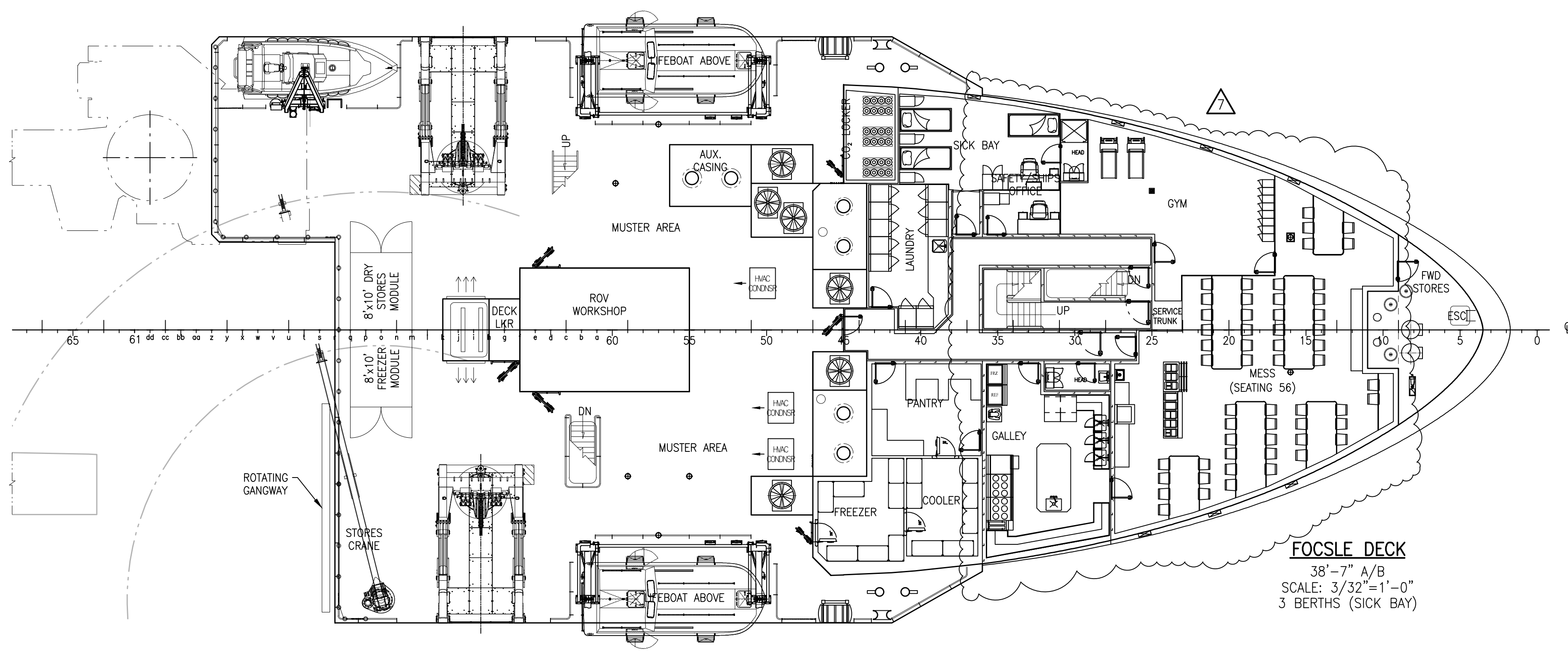
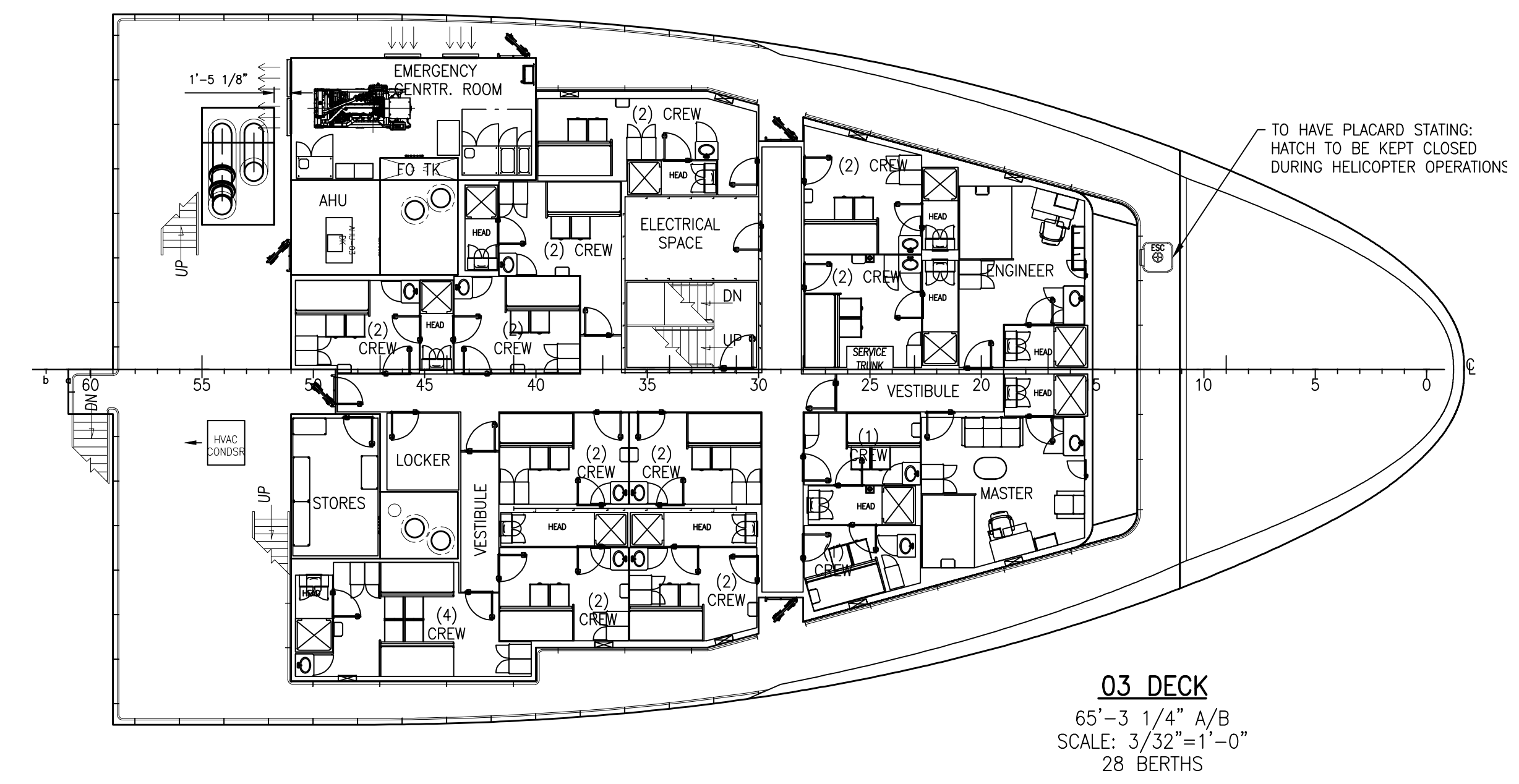
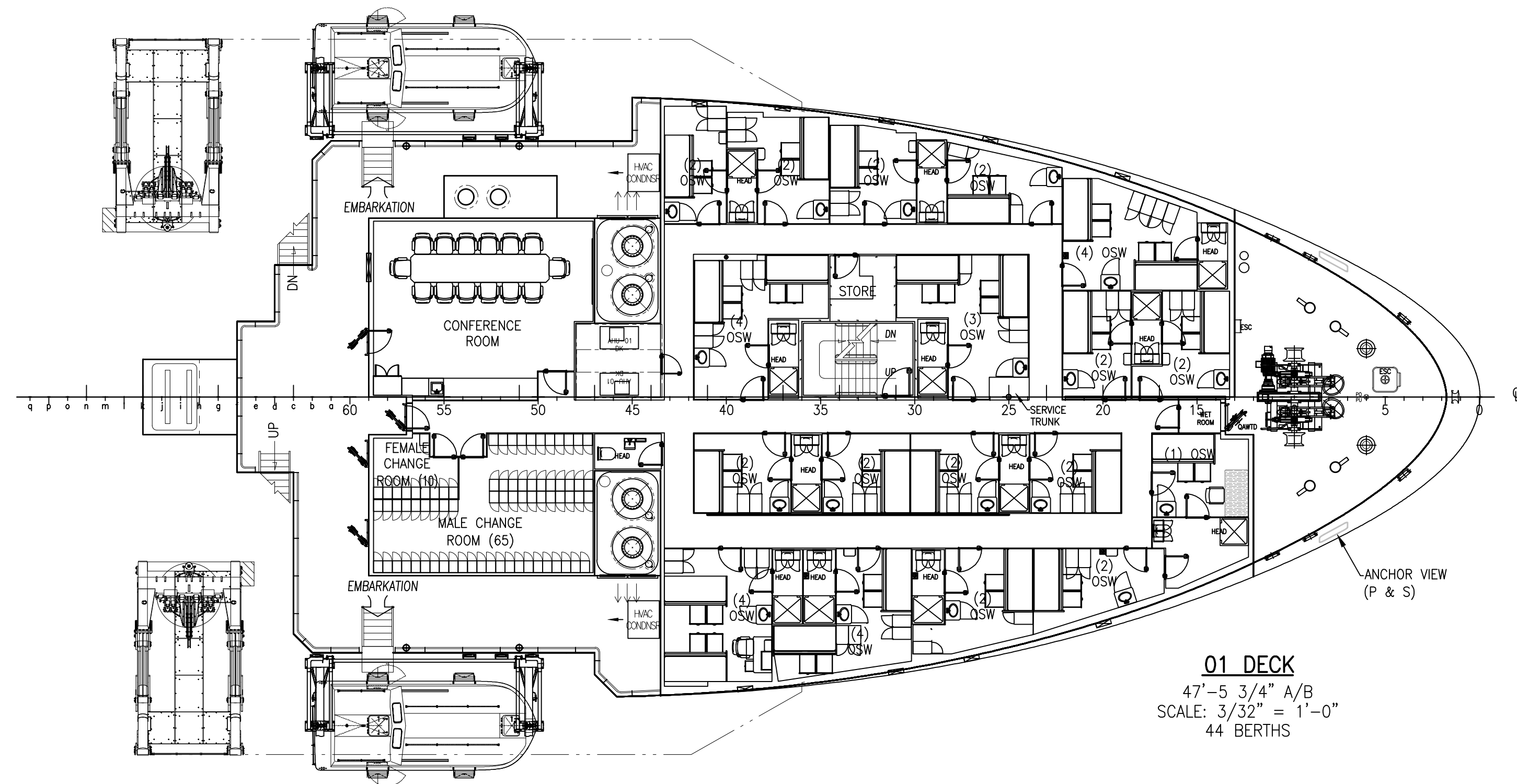
A

D

C

B

A



GULF ISLAND SHIPYARDS, LLC	TITLE:		
	GENERAL ARRANGEMENT		
	DRAWN BY:	BSO	SIZE: D
	CHECKED BY:	MC	DRAWING NO. 369-601-01
APPROVED FOR CONSTRUCTION:	# BY: #	SCALE: AS NOTED	REV. 7
		DATE: 26-OCT-15	SHEET 4 OF 5

32

31

30

29

28

27

26

25

40

39

38

37

36

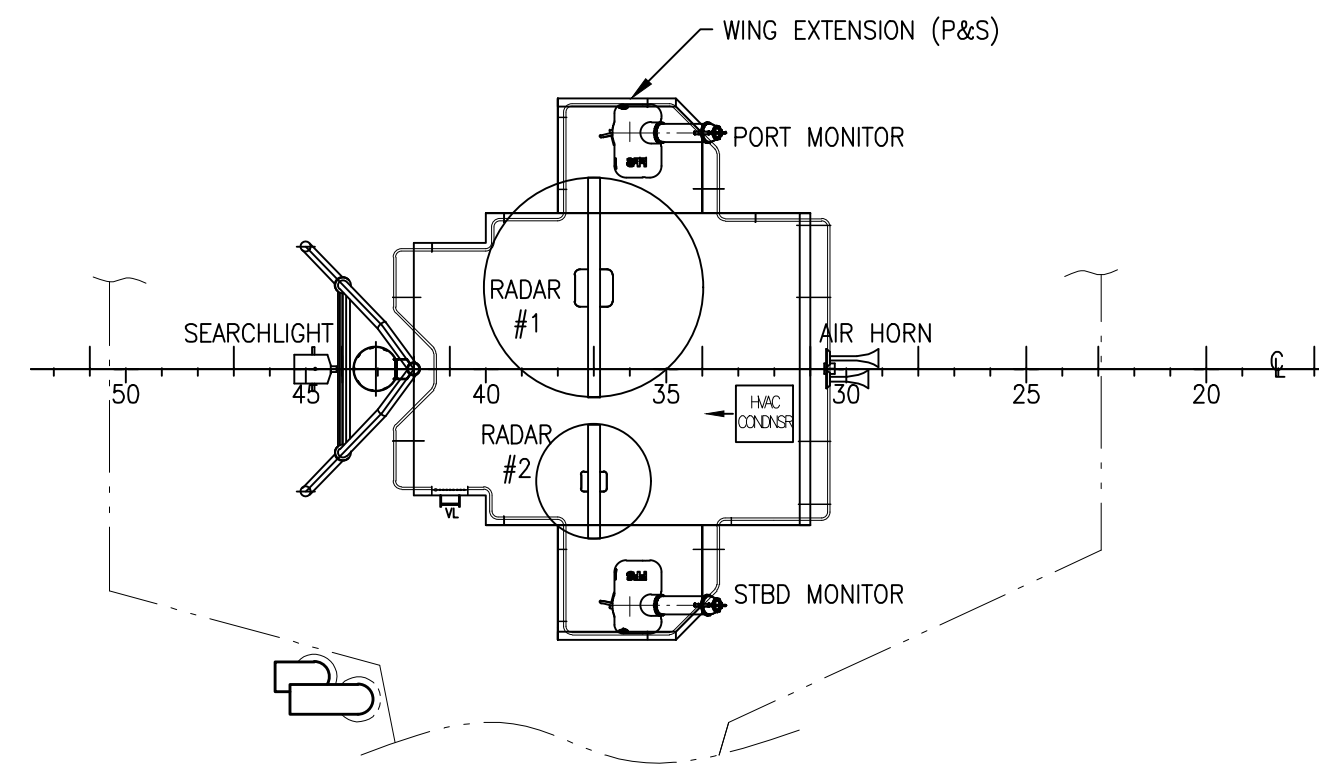
35

34

33

D

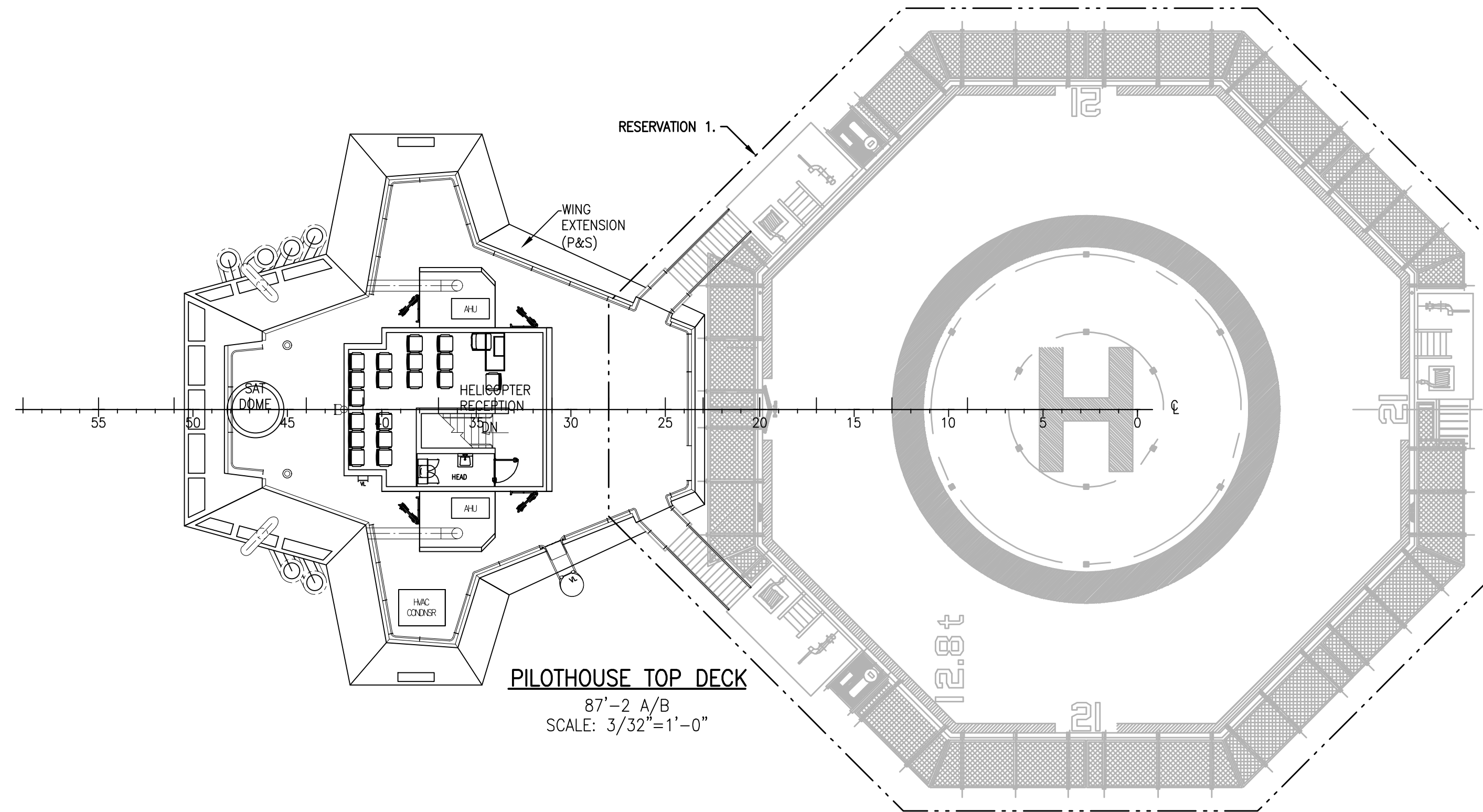
D



HELIDECK RECEPTION TOP
96'-0 1/4" A/B
SCALE: 3/32"=1'-0"

C

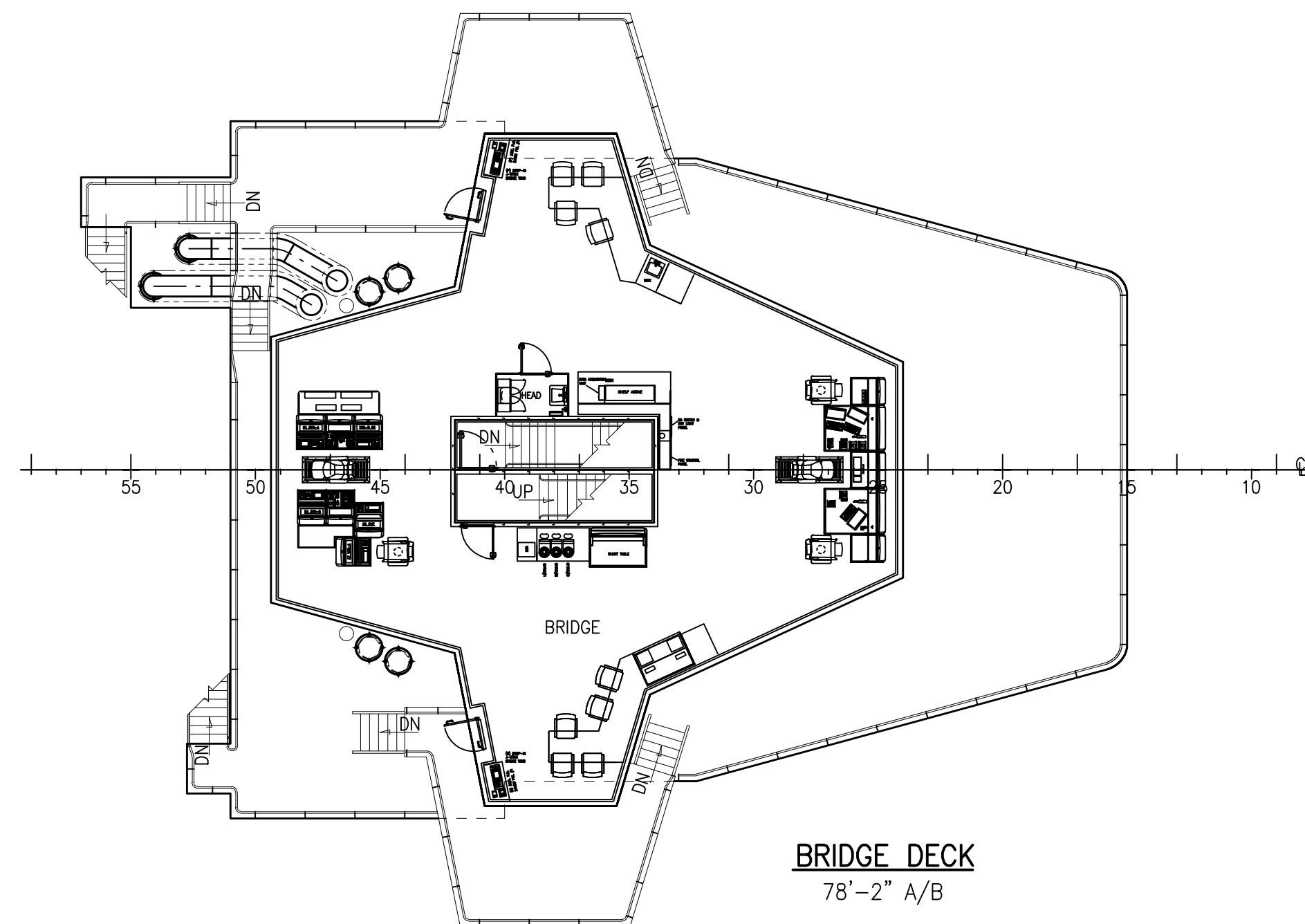
C



PILOTHOUSE TOP DECK
87'-2 A/B
SCALE: 3/32"=1'-0"

B

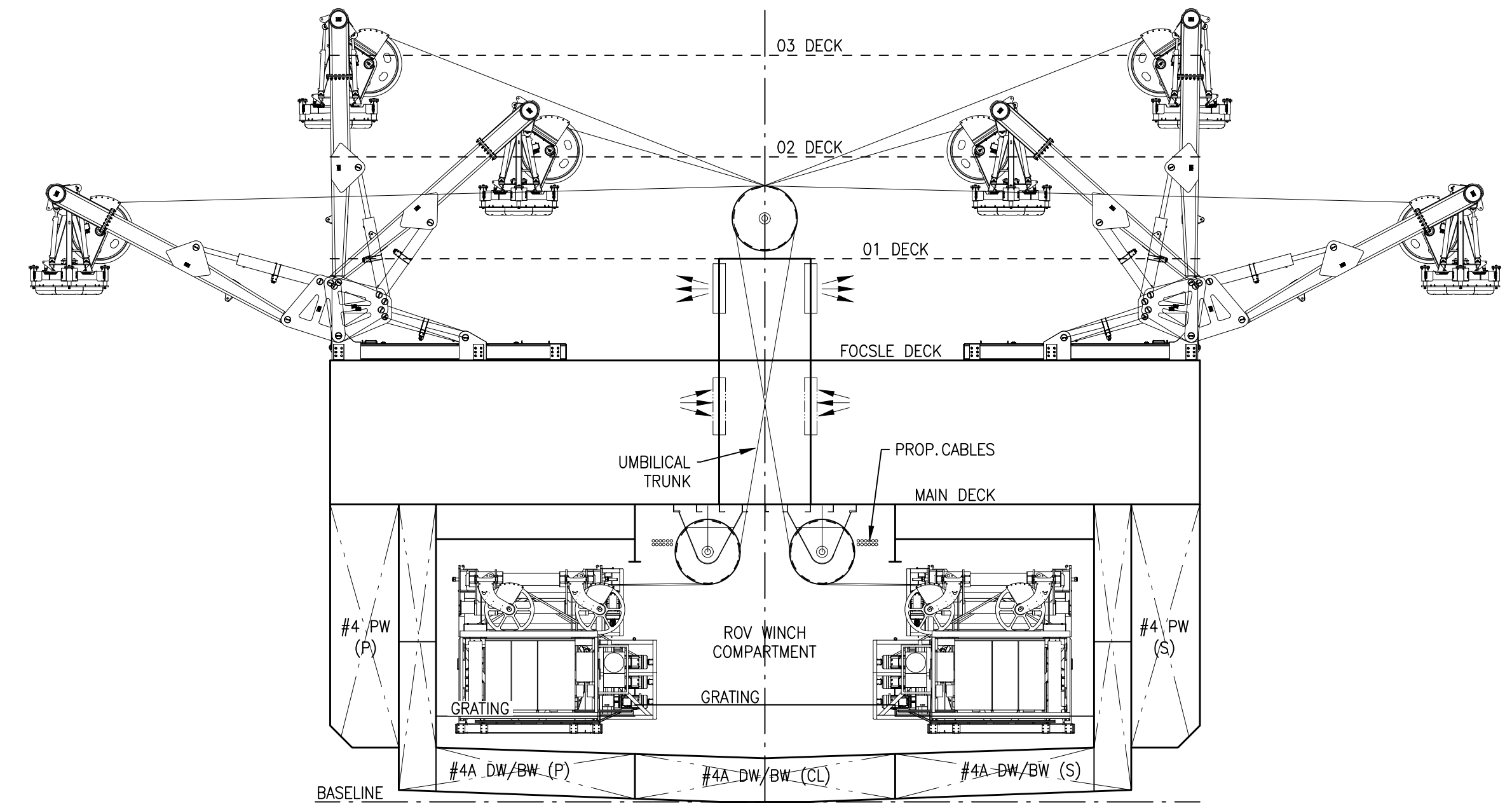
B



BRIDGE DECK
78'-2" A/B

A

A



SECTION AT FR j
LOOKING FWD
ROV WINCH & UMBILICAL ARRANGEMENT

40

39

38

37

36

35

34

33



TITLE:		GENERAL ARRANGEMENT		
DRAWN BY:	BSO	SIZE:	D	DRAWING NO. 369-601-01
CHECKED BY:	MC	SCALE:	AS NOTED	DATE: 26-OCT-15
APPROVED FOR CONSTRUCTION:	# BY: #	REV.	7	SHEET 5 OF 5