

8 7 6 5 4 3 2 1

PRINCIPAL PARTICULARS

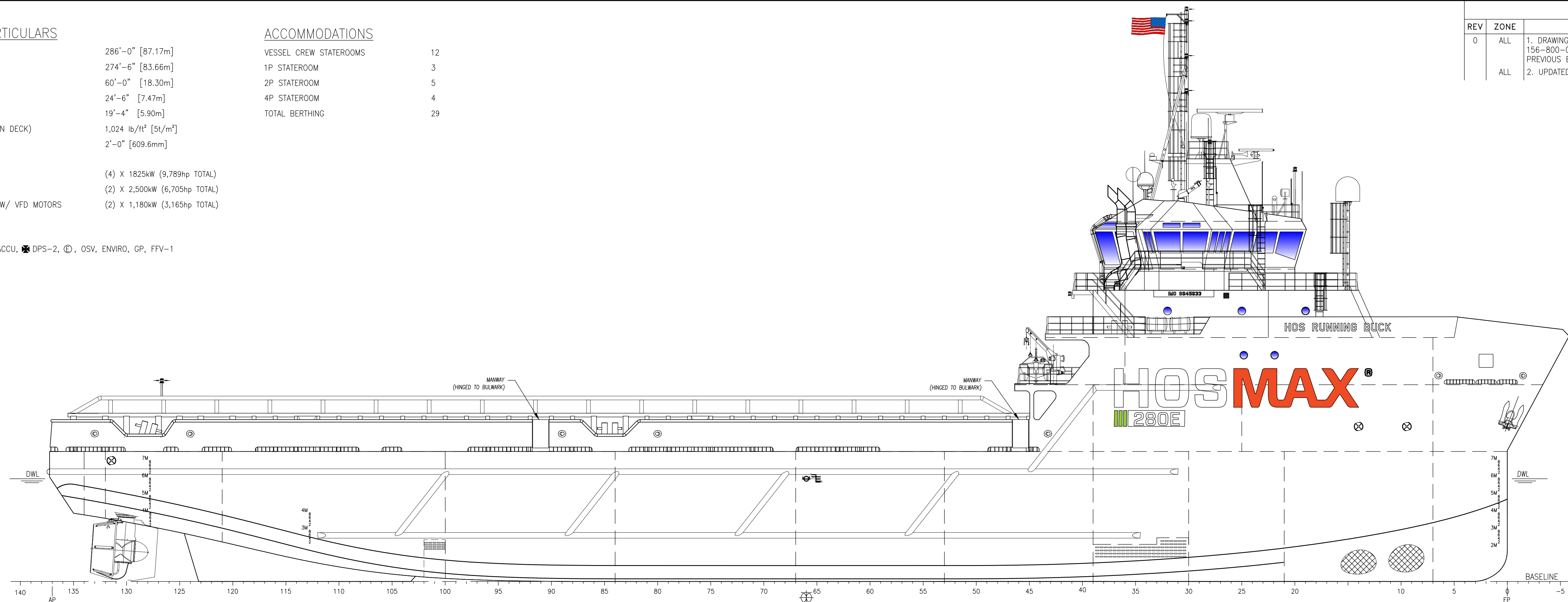
LOA	286'-0" [87.17m]
LWL	274'-6" [83.66m]
BEAM	60'-0" [18.30m]
DEPTH	24'-6" [7.47m]
DESIGN DRAFT	19'-4" [5.90m]
DECK LOAD RATING (MAIN DECK)	1,024 lb/ft ² [5t/m ²]
FRAME SPACING	2'-0" [609.6mm]
GENERATORS	(4) X 1825kW (9,789hp TOTAL)
MAIN PROPULSION	(2) X 2,500kW (6,705hp TOTAL)
BOW THRUSTERS - FP W/ VFD MOTORS	(2) X 1,180kW (3,165hp TOTAL)

ACCOMMODATIONS

VESSEL CREW STATEROOMS	12
1P STATEROOM	3
2P STATEROOM	5
4P STATEROOM	4
TOTAL BERTHING	29

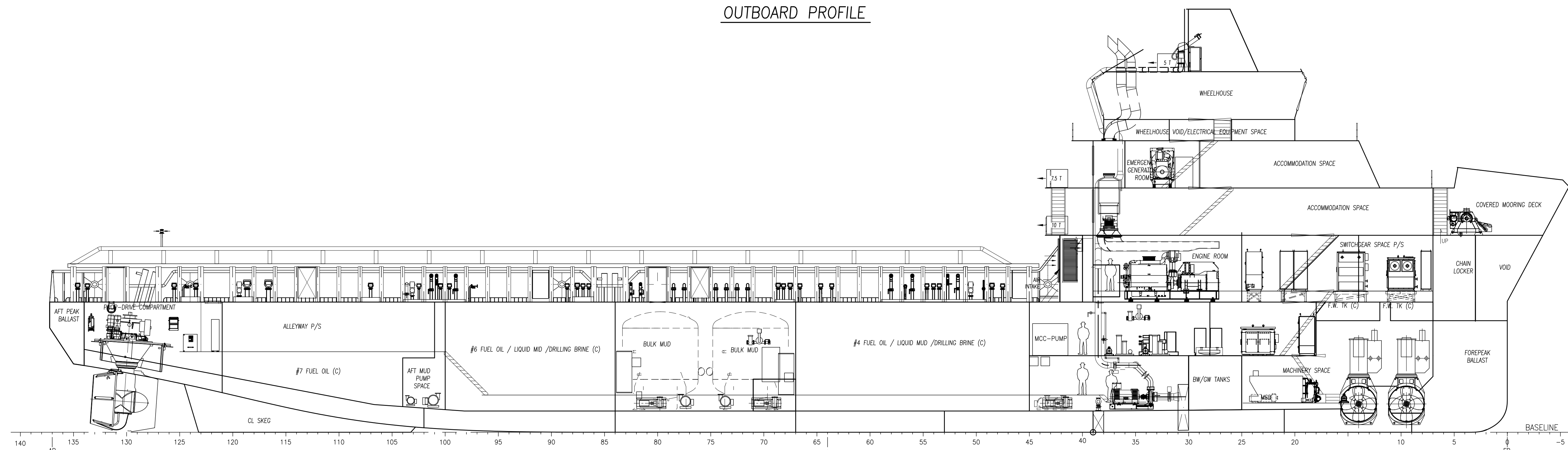
REGULATORY
 ABS, A1, AMS, ACCU, DPS-2, OSV, ENVIRO, GP, FFV-1

REVISIONS				
REV	ZONE	DESCRIPTION	DATE	BY
0	ALL	1. DRAWING DERIVED FROM AND SUPERCEDES ESG 156-800-001 R-. UPDATED TO HOS FORMATTING. PREVIOUS BRAVANTE VI.	03/04/22	SMM
	ALL	2. UPDATED PER CURRENT AS-BUILT CONFIGURATION.		



OUTBOARD PROFILE

05 DECK - WHEELHOUSE TOP	67'-10 1/2" [20.69m] ABL
04 DECK - WHEELHOUSE	58'-10 1/2" [17.95m] ABL
03 DECK - WHEELHOUSE VOID	54'-10 1/2" [16.73m] ABL
02 DECK - ACCOMMODATION DECK	45'-11 3/4" [14.02m] ABL
01 DECK - FOCSELE DECK	37'-1" [11.30m] ABL
1 DECK - MAIN DECK	24'-6" [7.47m] ABL
2 DECK - MEZZANINE DECK	14'-5" [4.39m] ABL
TANK TOP	4'-0" [1.22m] ABL



INBOARD PROFILE

05 DECK - WHEELHOUSE TOP	67'-10 1/2" [20.69m] ABL
04 DECK - WHEELHOUSE	58'-10 1/2" [17.95m] ABL
03 DECK - WHEELHOUSE VOID	54'-10 1/2" [16.73m] ABL
02 DECK - ACCOMMODATION DECK	45'-11 3/4" [14.02m] ABL
01 DECK - FOCSELE DECK	37'-1" [11.30m] ABL
1 DECK - MAIN DECK	24'-6" [7.47m] ABL
2 DECK - MEZZANINE DECK	14'-5" [4.39m] ABL
TANK TOP	4'-0" [1.22m] ABL

HOSMAX 280E / HOS RUNNING BUCK

THIS DRAWING, DESIGN CONCEPT AND SPECIFICATIONS ARE THE PROPERTY OF HORNBEEK OFFSHORE SERVICES AND ARE FURNISHED ON A CONFIDENTIAL BASIS WITH AN EXPRESSED UNDERSTANDING THAT THEY WILL NOT BE COPIED IN ANY MANNER USED FOR MANUFACTURE, SOLD, TRANSFERRED, NOR USED TO THE DETRIMENT OF SAID FIRM WITHOUT WRITTEN PERMISSION.

HORNBECK OFFSHORE SERVICES

DRAWN BY: S. MAUL
 CHECKED BY: M. STANSBURY
 APPROVED BY: J. GUIDRY

286'-0" X 60'-0" X 24'-6"

OUTBOARD PROFILE & GENERAL ARRANGEMENT

TASK No. 7584
 HULL No. 157

DRAWING No. 1,001
 SY: ESG

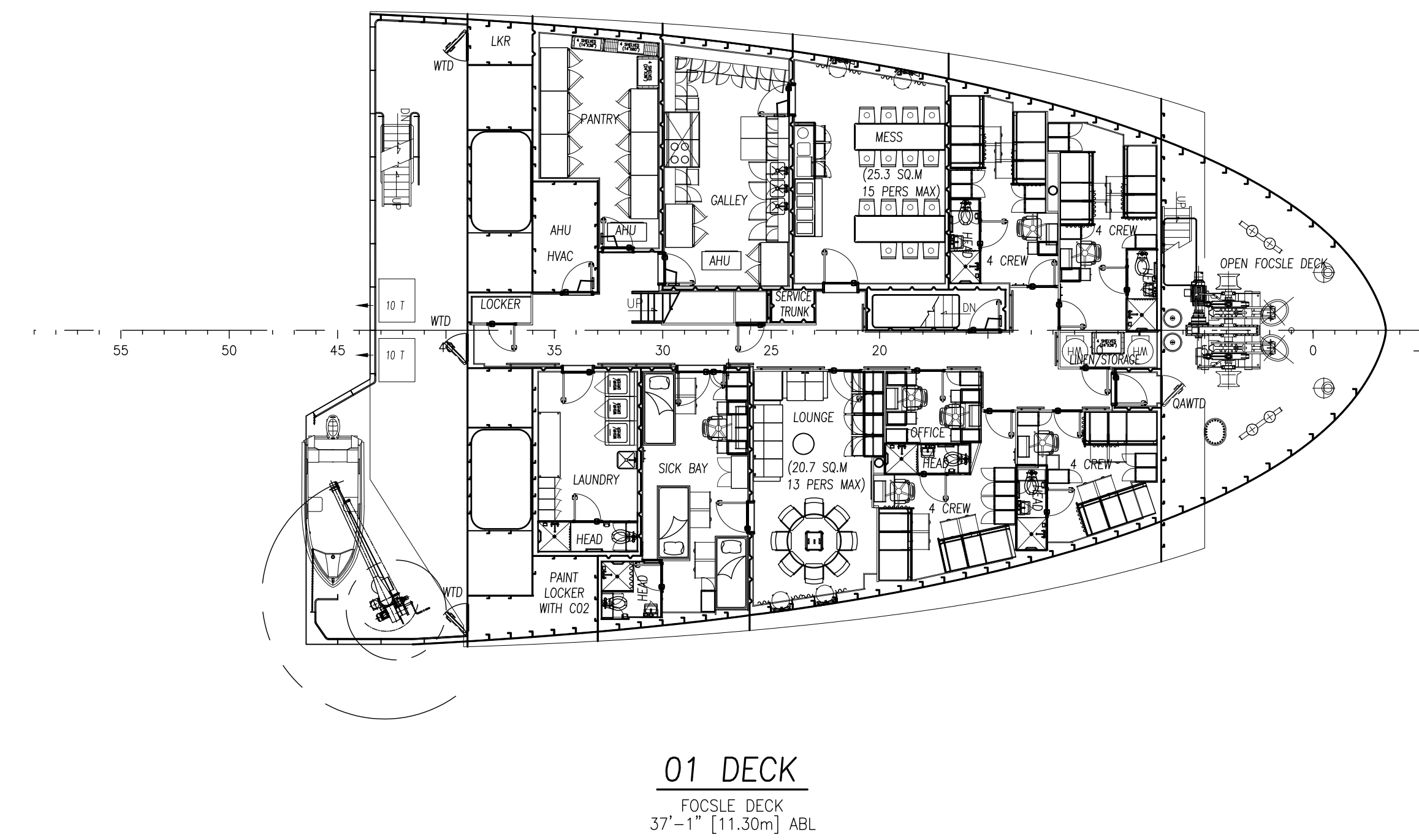
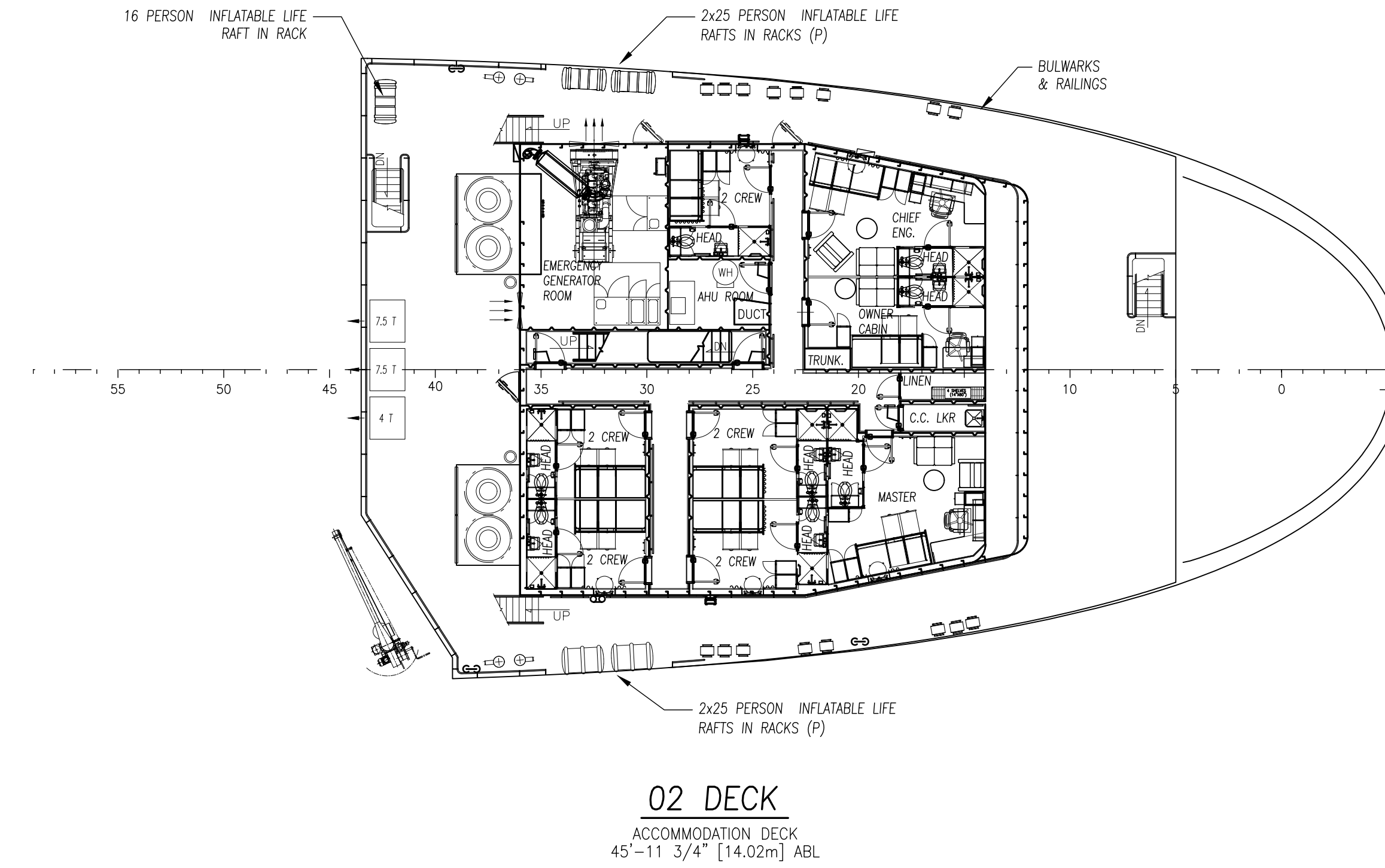
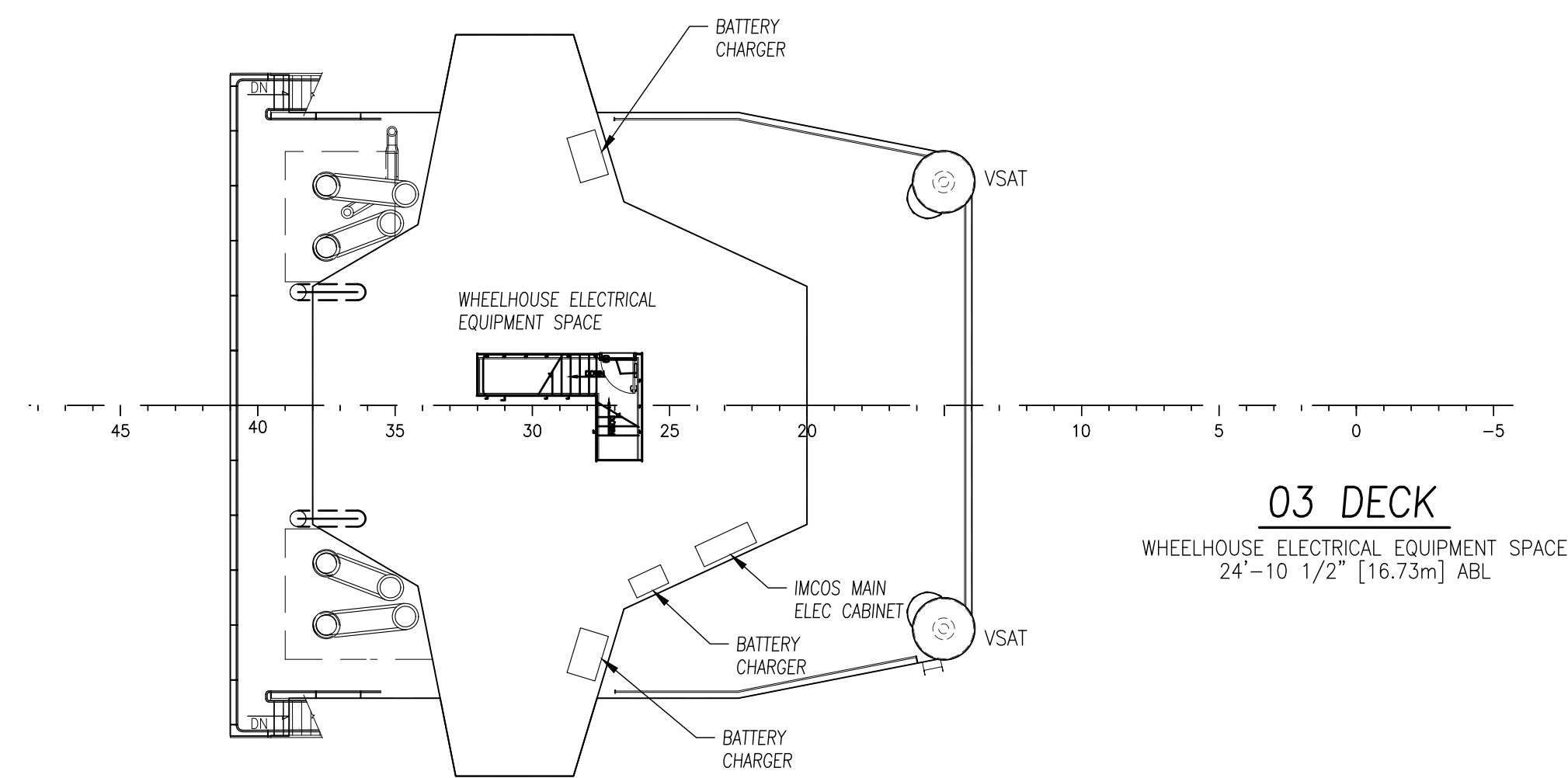
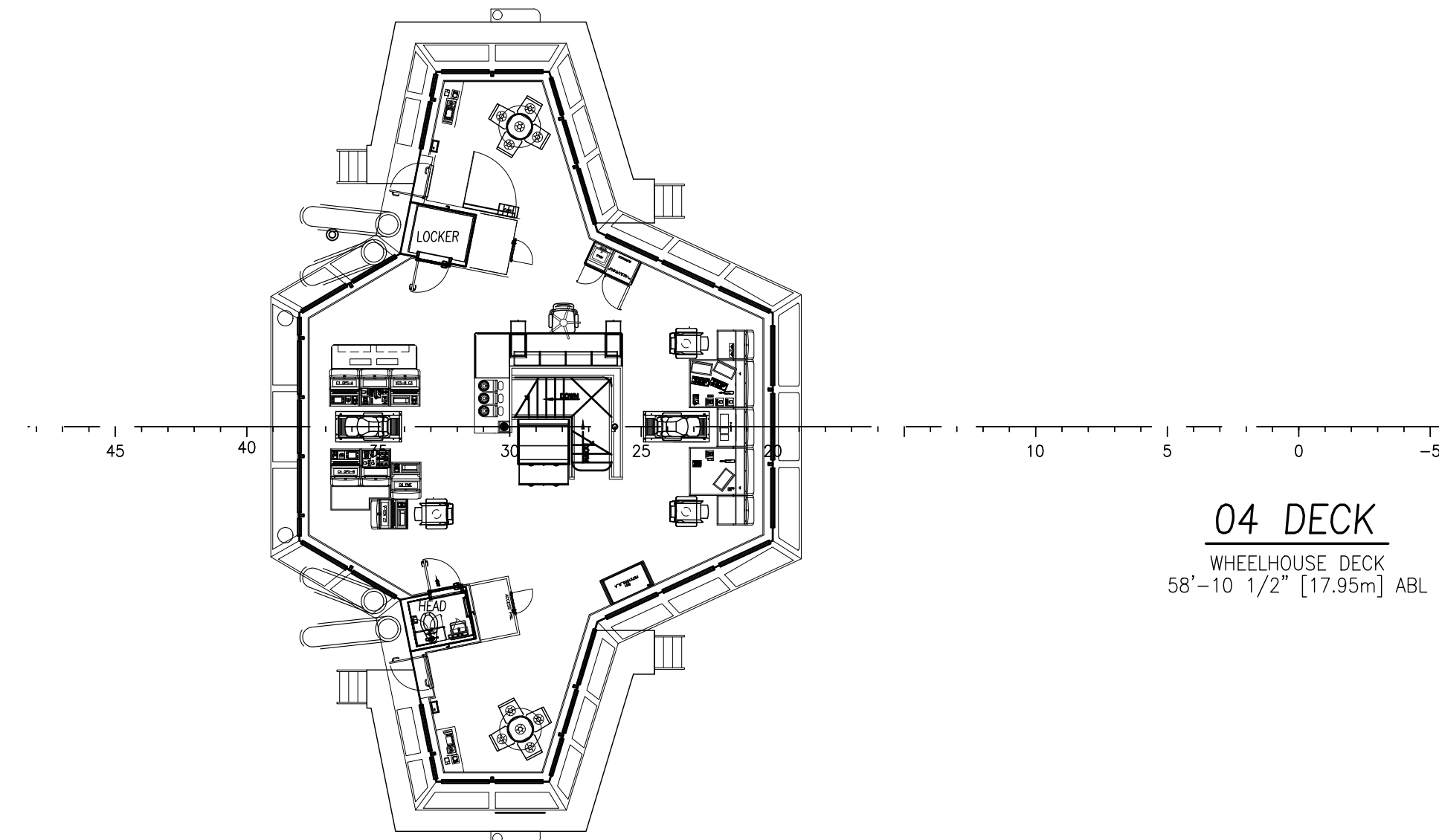
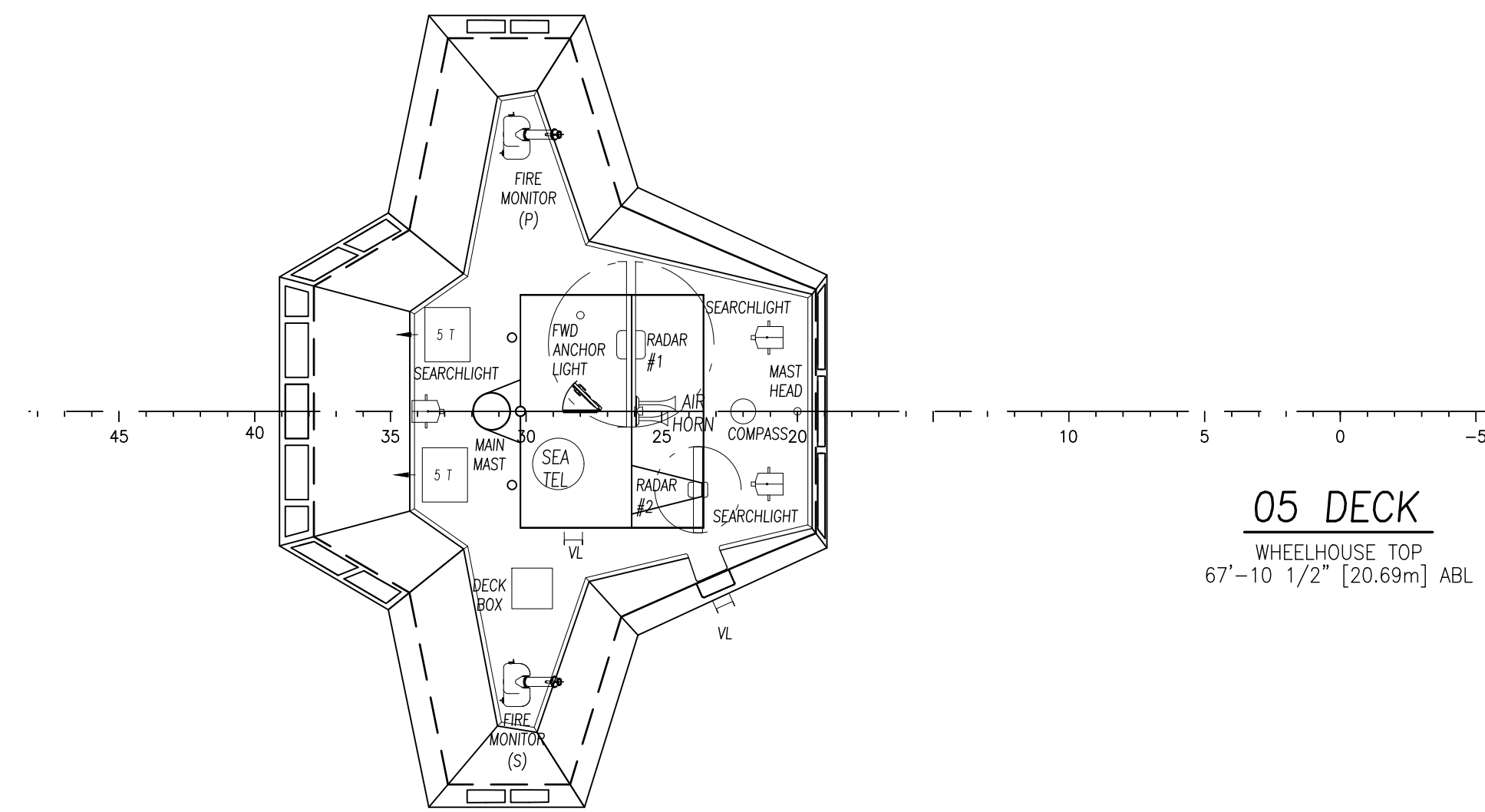
SCALE: 3/32"=1'-0"
 DATE: 03/04/22
 SHEET 1 OF 5

REV. 0

NO.	TITLE	DRAWING NUMBER
4	ARRANGEMENT (MARINE INTERIOR SYSTEM)	41029-004
3	SHELL EXPANSION (ESG)	155-100-002
2	LINES PLAN (ESG)	155-100-002
1	GENERAL ARRANGEMENT (ESG)	156-800-001 R-

REFERENCES

8 7 6 5 4 3 2 1

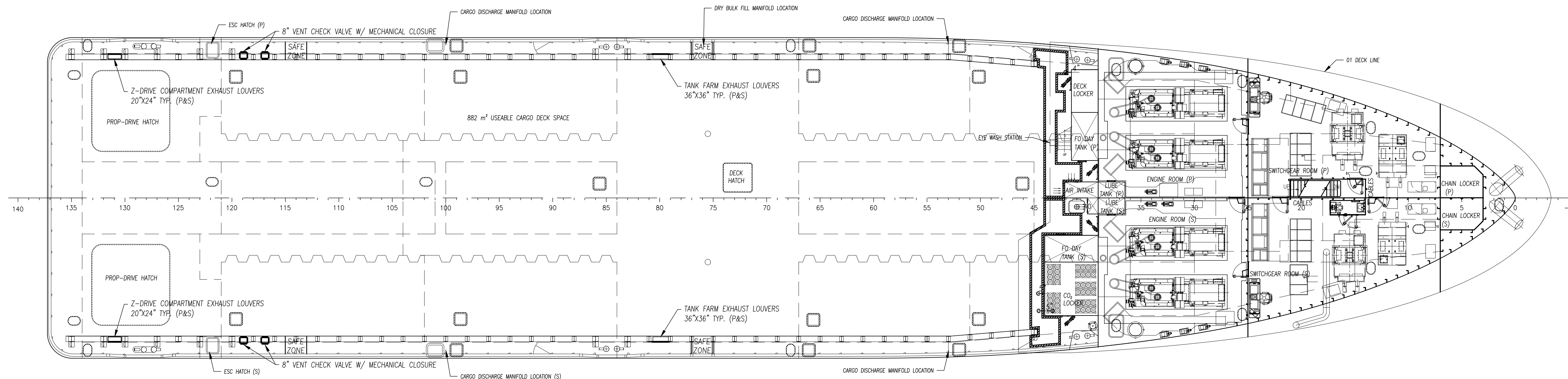


<p>HORNBECK OFFSHORE SERVICES</p>	<p>THIS DRAWING, DESIGN CONCEPT AND SPECIFICATIONS ARE THE PROPERTY OF HORNBECK OFFSHORE SERVICES AND ARE FURNISHED ON A CONFIDENTIAL BASIS WITH AN EXPRESSED UNDERSTANDING THAT THEY WILL NOT BE COPIED IN ANY MANNER USED FOR MANUFACTURE, SALE, TRANSFERRED, NOR USED TO THE DETRIMENT OF SAID FIRM WITHOUT WRITTEN PERMISSION.</p>			<p>OUTBOARD PROFILE & GENERAL ARRANGEMENT</p>	<p>SIZE D</p>
	<p>TASK No. 7584</p>	<p>DRAWING No. 1.001</p>	<p>SCALE: 3/32"=1'-0"</p>	<p>DATE: 03/04/22</p>	<p>REV. 0</p>
	<p>HULL No. 157</p>	<p>SY: ESG</p>	<p>SHEET 2 OF 5</p>	<p>REV. 0</p>	<p>REV. 0</p>

24 23 22 21 20 19 18 17

D

D



C

C

1 DECK
MAIN DECK
24'-6" [7.47m] ABL

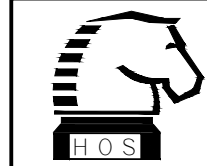
B

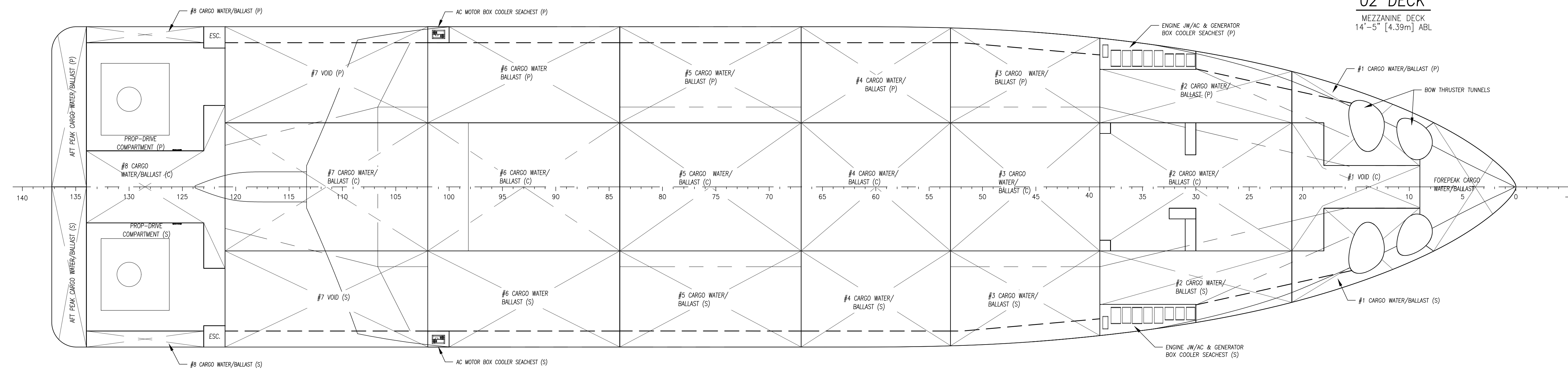
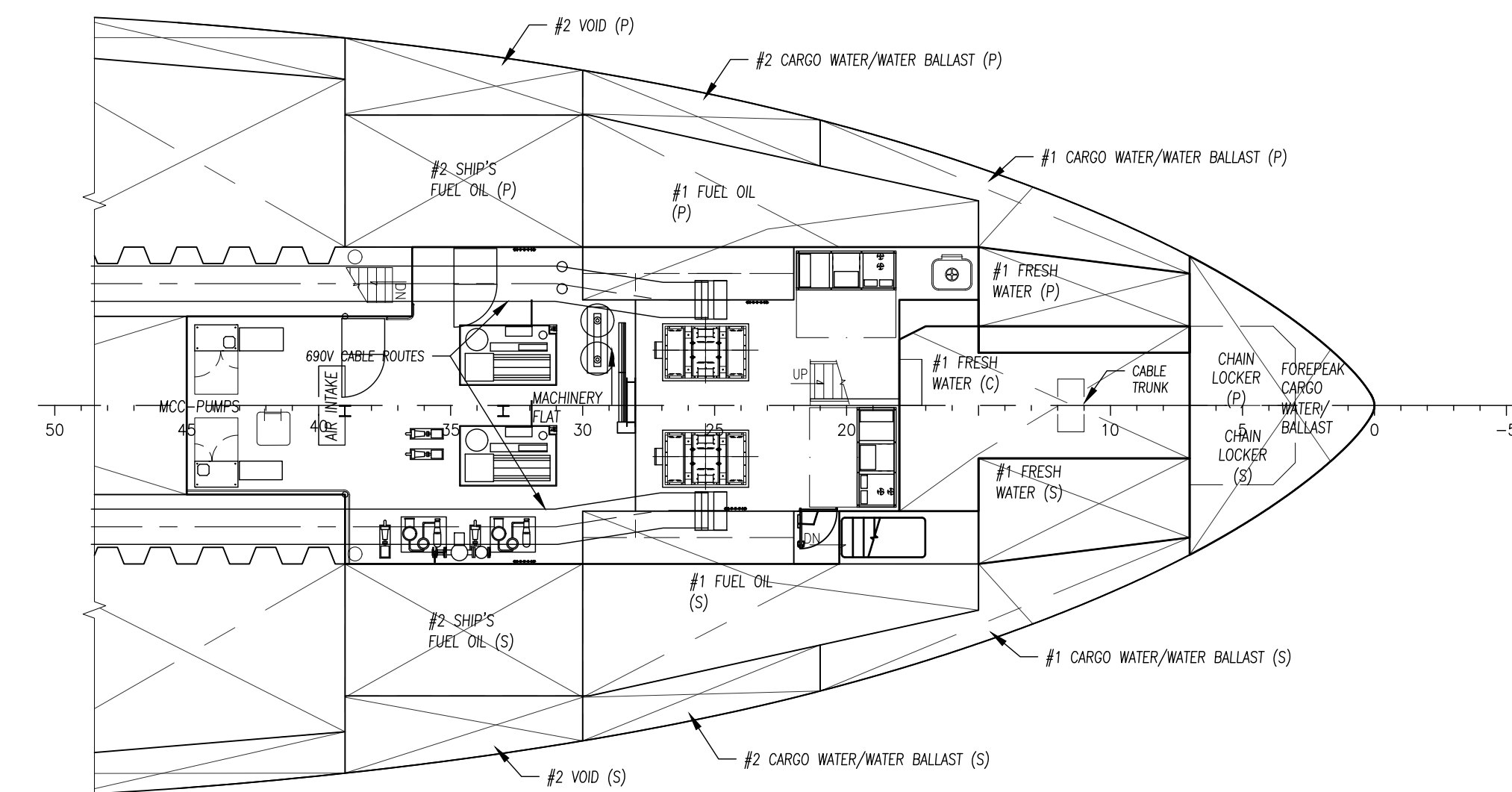
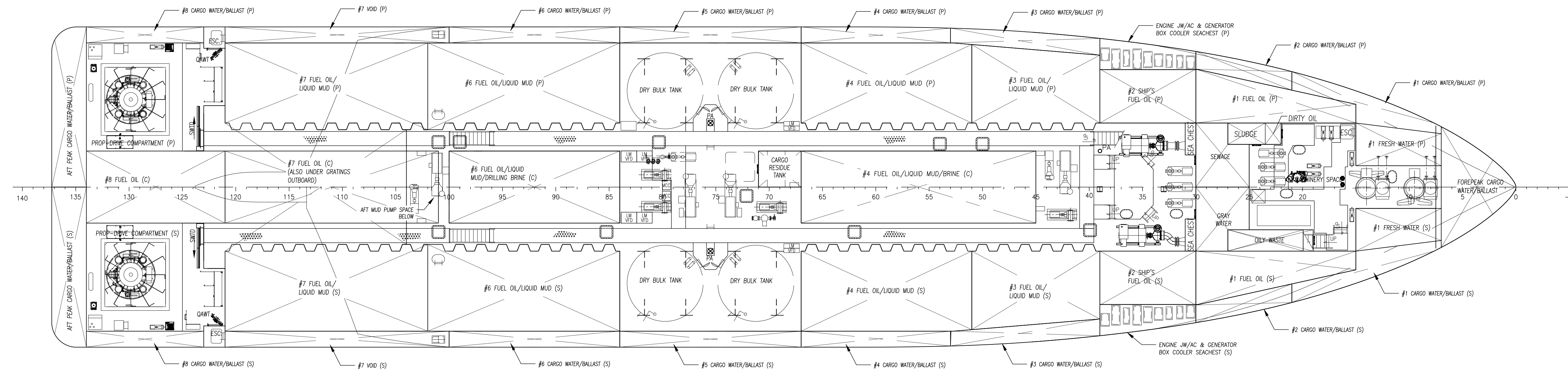
B


A

A

24 23 22 21 20 19 18 17

 <p>THIS DRAWING, DESIGN CONCEPT AND SPECIFICATIONS ARE THE PROPERTY OF HORNBECK OFFSHORE SERVICES AND ARE FURNISHED ON A CONFIDENTIAL BASIS WITH AN EXPRESSED UNDERSTANDING THAT THEY WILL NOT BE COPIED IN ANY MANNER USED FOR MANUFACTURE, SOLD, TRANSFERRED, NOR USED TO THE DETRIMENT OF S&D FIRM WITHOUT WRITTEN PERMISSION.</p> <p>HORNBECK OFFSHORE SERVICES</p>	<p>OUTBOARD PROFILE & GENERAL ARRANGEMENT</p>			<p>SIZE D</p>
	<p>TASK No. 7584</p>	<p>DRAWING No. 1.001</p>	<p>SCALE: 3/32"=1'-0"</p>	<p>REV. 0</p>
	<p>HULL No. 157</p>	<p>SY: ESG</p>	<p>DATE: 03/04/22 SHEET 3 OF 5</p>	



 <p>THIS DRAWING, DESIGN CONCEPT AND SPECIFICATIONS ARE THE PROPERTY OF HORNBECK OFFSHORE SERVICES AND ARE FURNISHED ON A CONFIDENTIAL BASIS WITH AN EXPRESSED UNDERSTANDING THAT THEY WILL NOT BE COPIED IN ANY MANNER USED FOR MANUFACTURE, SALE, TRANSFERRED, NOR USED TO THE DETRIMENT OF SAID FIRM WITHOUT WRITTEN PERMISSION.</p> <p>HORNBECK OFFSHORE SERVICES</p>	<p>OUTBOARD PROFILE & GENERAL ARRANGEMENT</p>		<p>SIZE D</p>	
	<p>TASK No. 7584</p>	<p>DRAWING No. 1.001</p>	<p>SCALE: 3/32"=1'-0" DATE: 03/04/22</p>	<p>REV. 0</p>
	<p>HULL No. 157</p>	<p>SY: ESG</p>	<p>SHEET 4 OF 5</p>	

40

39

38

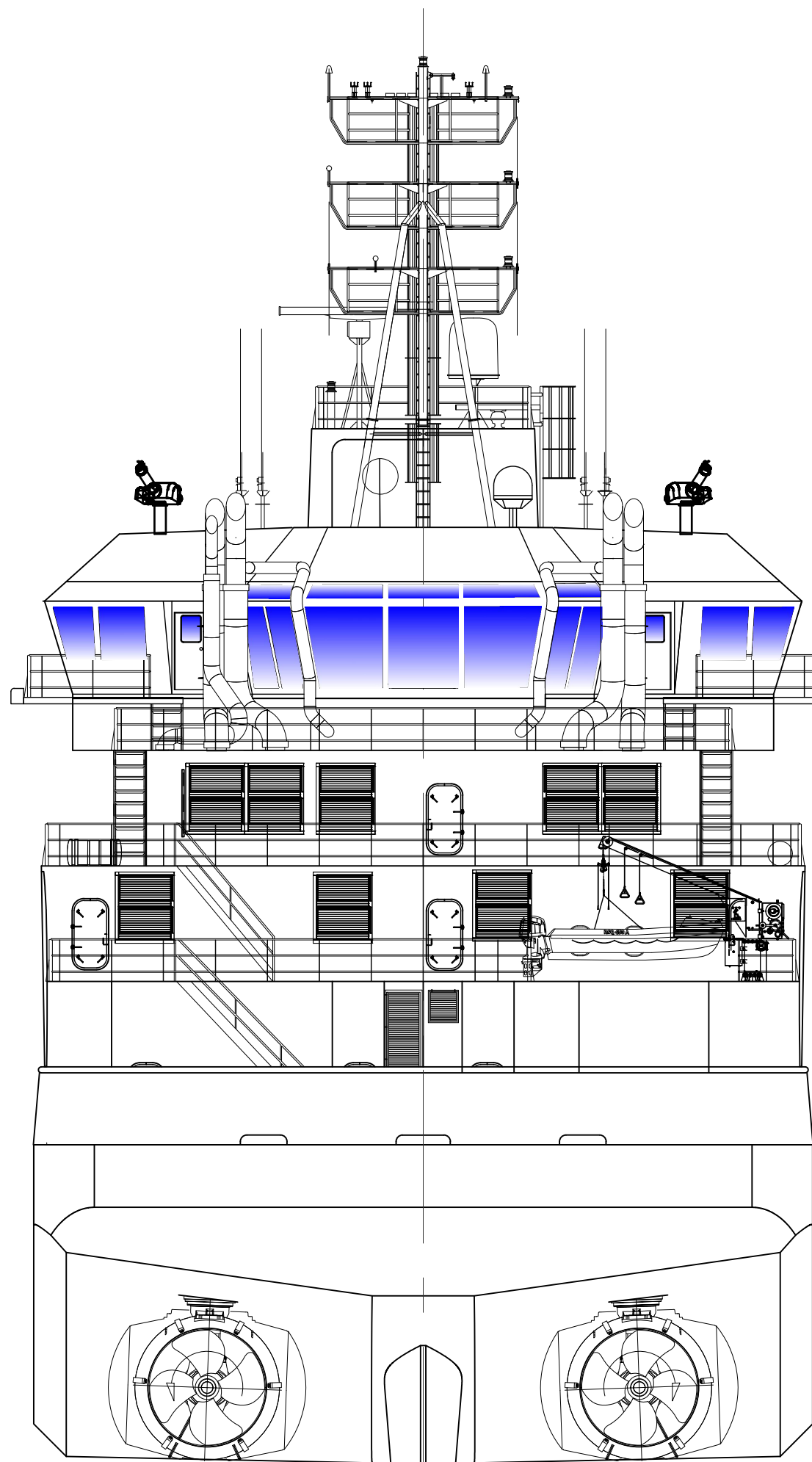
37

36

35

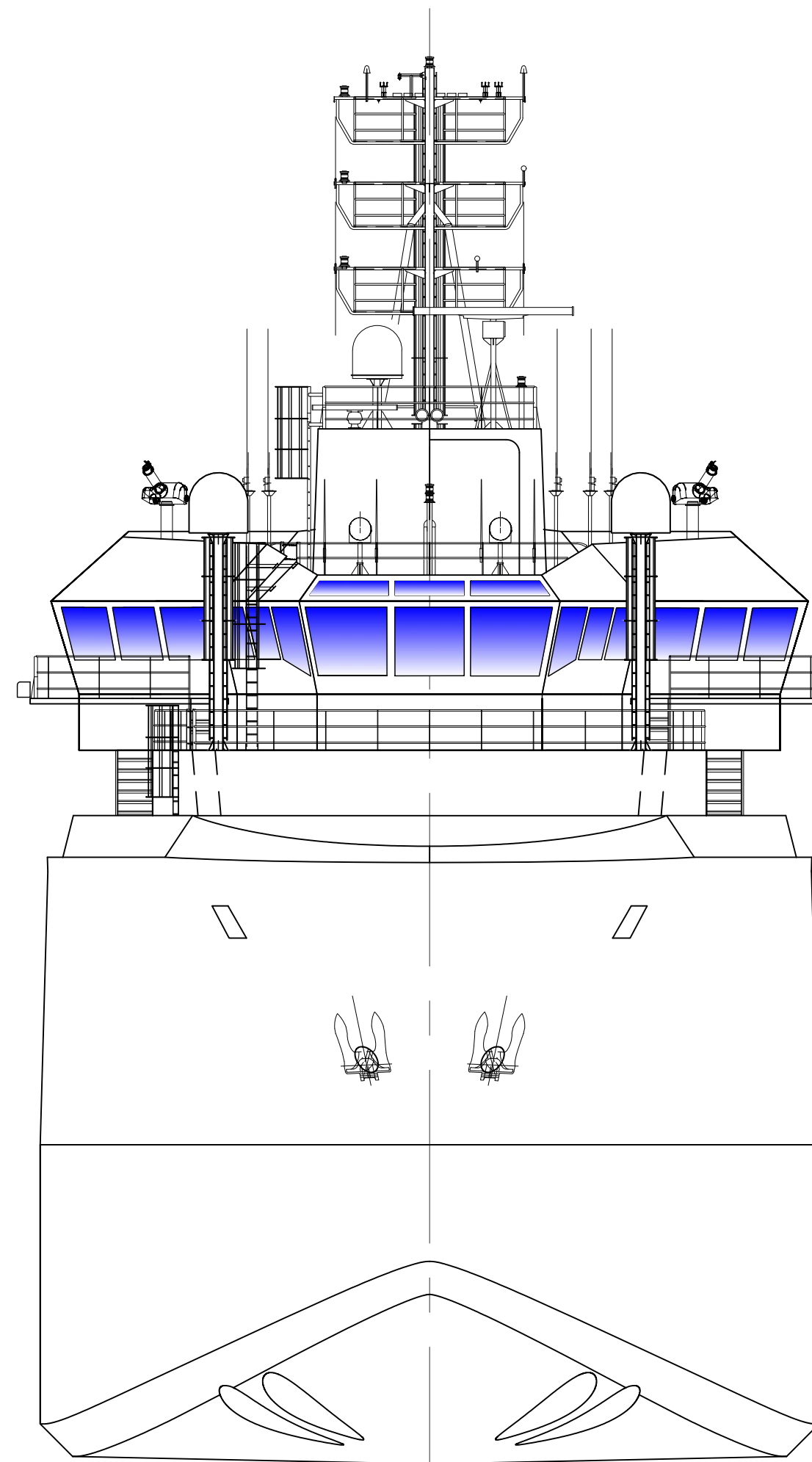
34

33




STERN VIEW
LOOKING FWD

- 05 DECK - WHEELHOUSE TOP
67'-10 1/2" [20.69m] ABL
- 04 DECK - WHEELHOUSE
58'-10 1/2" [17.95m] ABL
- 03 DECK - WHEELHOUSE VOID
54'-10 1/2" [16.73m] ABL
- 02 DECK - ACCOMMODATION DECK
45'-11 3/4" [14.02m] ABL
- 01 DECK - FOCsLE DECK
37'-1" [11.30m] ABL
- 1 DECK - MAIN DECK
24'-6" [7.47m] ABL
- 2 DECK - MEZZANINE DECK
14'-5" [4.39m] ABL
- TANK TOP
4'-0" [1.22m] ABL



BOW VIEW
LOOKING AFT

- 05 DECK - WHEELHOUSE TOP
67'-10 1/2" [20.69m] ABL
- 04 DECK - WHEELHOUSE
58'-10 1/2" [17.95m] ABL
- 03 DECK - WHEELHOUSE VOID
54'-10 1/2" [16.73m] ABL
- 02 DECK - ACCOMMODATION DECK
45'-11 3/4" [14.02m] ABL
- 01 DECK - FOCsLE DECK
37'-1" [11.30m] ABL
- 1 DECK - MAIN DECK
24'-6" [7.47m] ABL
- 2 DECK - MEZZANINE DECK
14'-5" [4.39m] ABL
- TANK TOP
4'-0" [1.22m] ABL

 HORNBECK OFFSHORE SERVICES	THIS DRAWING, DESIGN CONCEPT AND SPECIFICATIONS ARE THE PROPERTY OF HORNBECK OFFSHORE SERVICES AND ARE FURNISHED ON A CONFIDENTIAL BASIS WITH AN EXPRESSED UNDERSTANDING THAT THEY WILL NOT BE COPIED IN ANY MANNER USED FOR MANUFACTURE, SOLD, TRANSFERRED, NOR USED TO THE DETRIMENT OF SAID FIRM WITHOUT WRITTEN PERMISSION. HOS ©			OUTBOARD PROFILE & GENERAL ARRANGEMENT	SIZE D
	TASK No. 7584 HULL No. 157	DRAWING No. 1.001	SCALE: 3/32"=1'-0" DATE: 03/04/22 SHEET 5 OF 5	REV. 0	

40

39

38

37

36

35

34

33