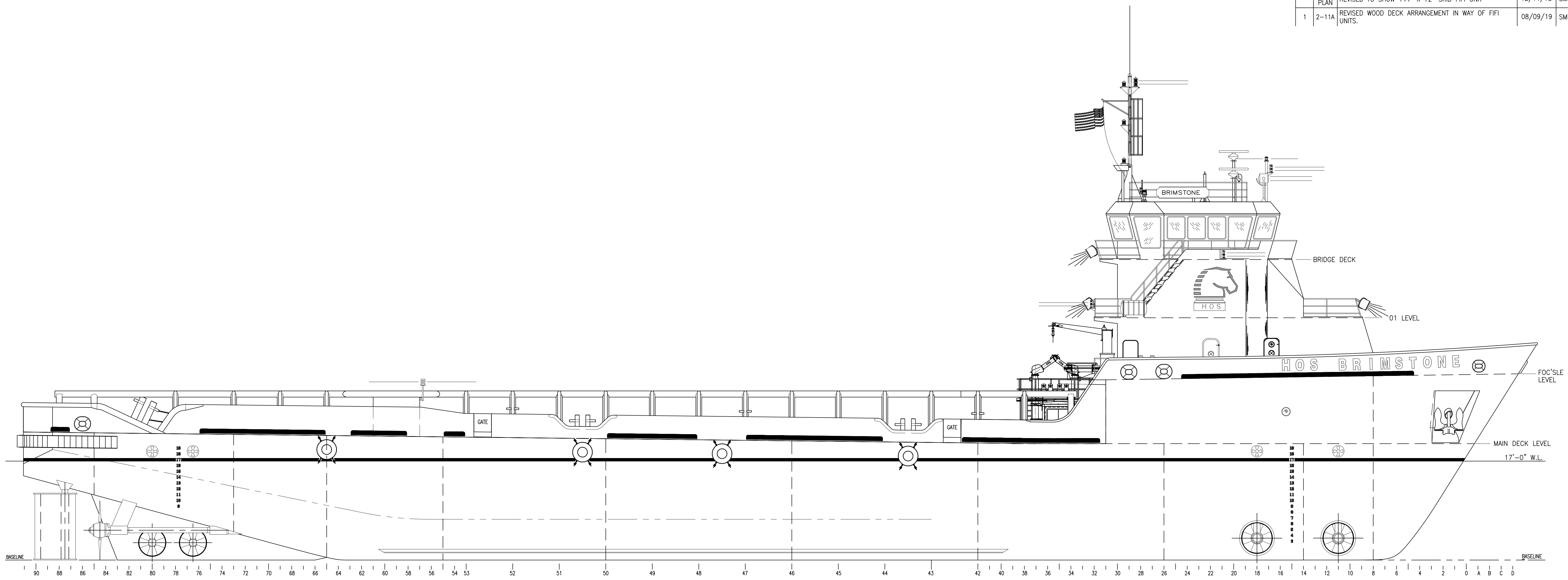


REVISIONS

REV	ZONE	DESCRIPTION	DATE	BY
0	ALL	ISSUED FOR PRELIMINARY REVIEW	11/02/18	SMM
	MD PLAN	REVISED TO SHOW 144" X 72" SKID FIFI UNIT	12/11/18	SMM
1	2-11A	REVISED WOOD DECK ARRANGEMENT IN WAY OF FIFI UNITS.	08/09/19	SMM



OUTBOARD PROFILE

HOS 265 CLASS / HOS BRIMSTONE

THIS DRAWING, DESIGN CONCEPT AND SPECIFICATIONS ARE THE PROPERTY OF HORNBECK OFFSHORE SERVICES AND ARE FURNISHED ON A CONFIDENTIAL BASIS WITH AN EXPRESSED UNDERSTANDING THAT THEY WILL NOT BE COPIED IN ANY MANNER USED FOR MANUFACTURE, SOLD, TRANSFERRED, NOR USED TO THE DETRIMENT OF SAID FIRM WITHOUT WRITTEN PERMISSION. HOS ©  
HORNBECK OFFSHORE SERVICES

DRAWN BY: S. MAUL	260'-0" X 60'-0" X 21'-0"			SIZE D
CHECKED BY: M. STANSBURY	OUTBOARD PROFILE & GENERAL ARRANGEMENT			REV. 1
APPROVED BY: J. GUIDRY	TASK No. 6870	DRAWING No. 1,001	SCALE: 1/8"=1'-0" DATE: 11/01/18	SHEET 1 OF 2

