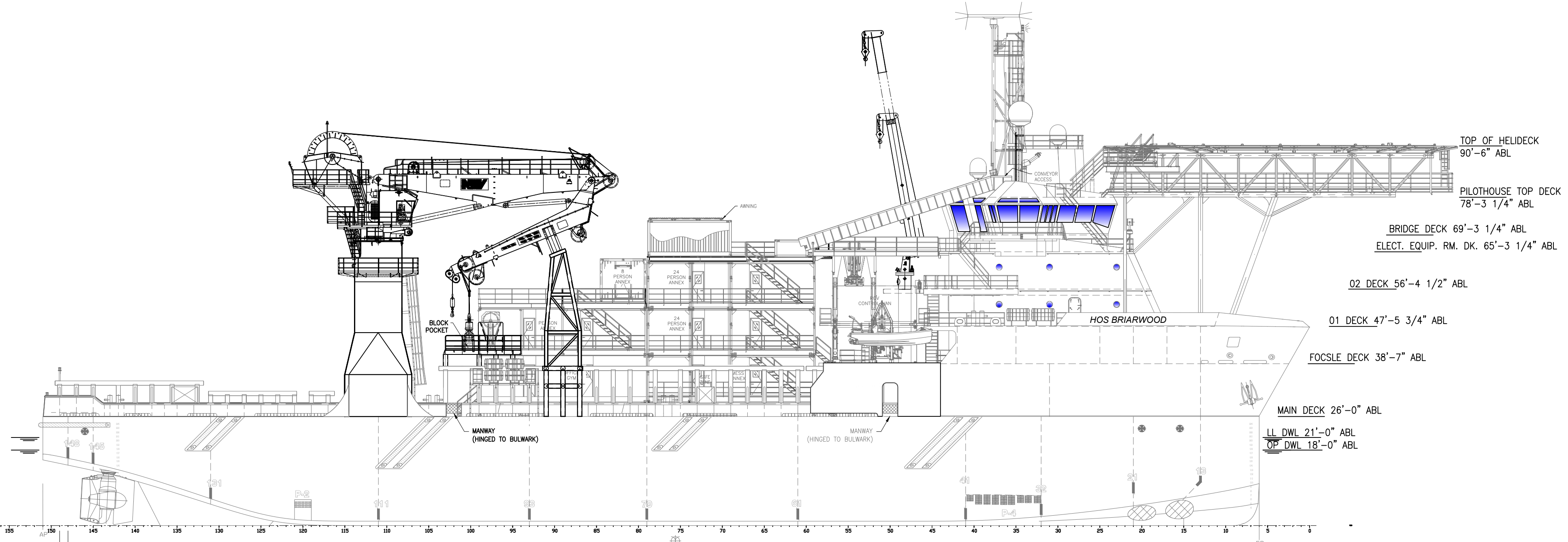
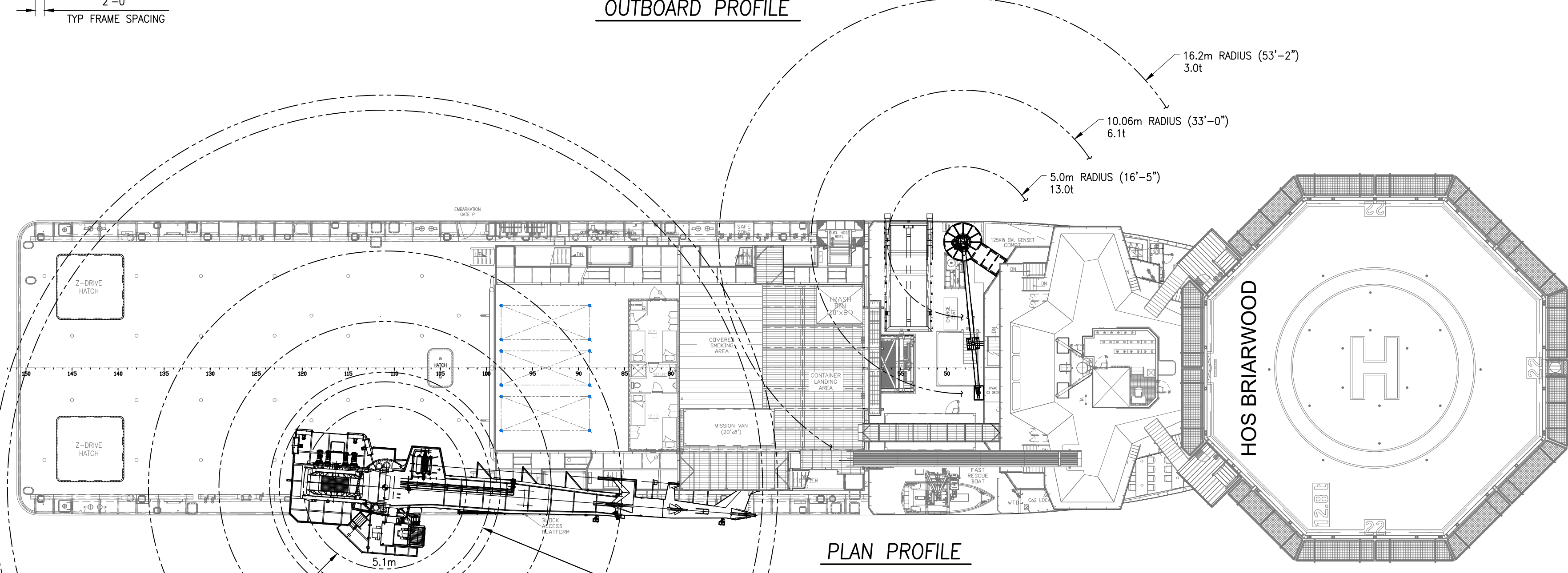


REVISIONS

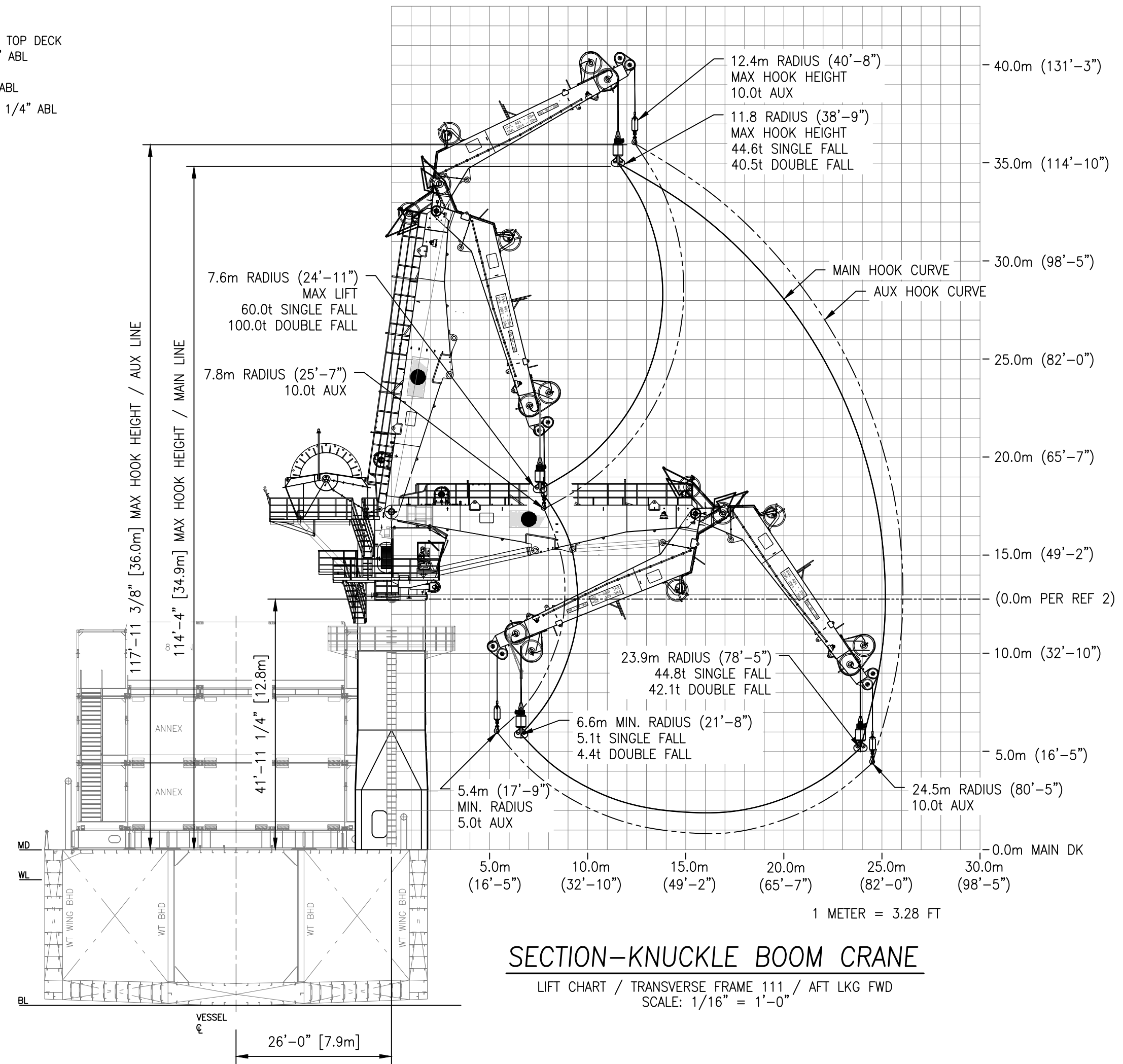
REV	ZONE	DESCRIPTION	DATE	BY
0	ALL	ISSUED APPROVED	11/18/19	SMM
1	ALL	UPDATED SWL TO REFLECT CRANE WIRE DERATING	06/23/20	MGS



OUTBOARD PROFILE



PLAN PROFILE



SECTION-KNUCKLE BOOM CRANE

LIFT CHART / TRANSVERSE FRAME 111 / AFT LKG FWD
SCALE: 1/16" = 1'-0"

KNUCKLE BOOM CRANE: 100MT NATIONAL OILWELL KBC

MAIN HOOK (2 FALLS, INTERNAL LIFT)
S.W.L. (load/rad.) 100t/7.6m-11m

MAIN HOOK (1 FALL, INTERNAL LIFT)
S.W.L. (load/rad.) 60t/7.6m-15.7m

WIRE LENGTH 2000m

WHIP HOOK
S.W.L. (load/rad.) 10t/7.0m-26.0m

MAN RATING 5.0t/7.0m-26.0m (AUX. HOOK)

WATER DEPTH (METERS)	SINGLE FALL LIVE LOAD (PRODUCTIVE)	DOUBLE FALL LIVE LOAD (PRODUCTIVE)
400	54.5t	89.1t
800	49.1t	78.2t
1000	46.3t	72.7t
1200	43.6t	-
1600	38.2t	-
2000	32.7t	-

- NOTES:
1. WET WIRE WEIGHT IS CONSIDERED IN LIVE LOAD CAPACITY ABOVE.
 2. PRODUCTIVE LOAD IS THE MAX. LOAD AT DEPTH.
 3. LOAD BOUANCY, DAMPING, AND GEOMETRY MAY AFFECT ULTIMATE RATING FOR ANY GIVEN SUBSEA LIFT.

STORES CRANE: 13t HYDRAULIC BOOM

MAIN HOIST (SINGLE FALL)
S.W.L. (load/rad./speed) 13t/1.87-5.0m/6m/min

S.W.L. (load/rad./speed) 4.9t/11.0m/8.5m/min

S.W.L. (load/rad./speed) 3t/16.2m/8.7m/min

MINIMUM RADIUS 1.87m

MAXIMUM RADIUS 16.16m

WIRE LENGTH 132m

PERSONNEL RATING 0.6t/1.87m-16m/20m/min

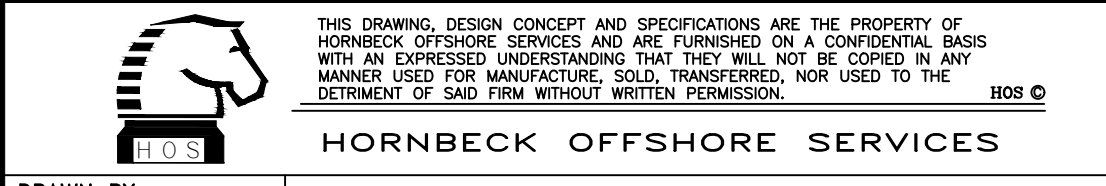
SECTION-STORES CRANE

6" AFT OF FR48 / LKG FWD
SCALE: 1/16" = 1'-0"

NO.	TITLE	DRAWING NUMBER
7.	UNIT 8 (FR2 TO FR50)	205-110-008
6.	KBC PEDESTAL FOUNDATION	3.452
5.	CRANE MANUAL/LOAD CHART (APPLETON DECK CRANE)	19092
4.	CRANE DATA SHEET (NOV KBC)	V4742-Z-DS-001
3.	DERATING CHARTS (NOV KBC)	V4742-Z-RD-003B
2.	CRANE LOAD DIAGRAM (NOV KBC)	V4742-Z-RD-010B
1.	OUTBOARD PROFILE & GA	1.001

REFERENCES

HOSMAX 310EQH - HOS BRIARWOOD



DRAWN BY: S. MAUL

CHECKED BY: M. STANSBURY

APPROVED BY: J. GUIDRY

TASK No. 7059

DRAWING No. 6.805

SCALE: AS NOTED

DATE: 11/15/19

HULL No. 210

SY: ESG

SHEET 1 OF 1

REV. 1